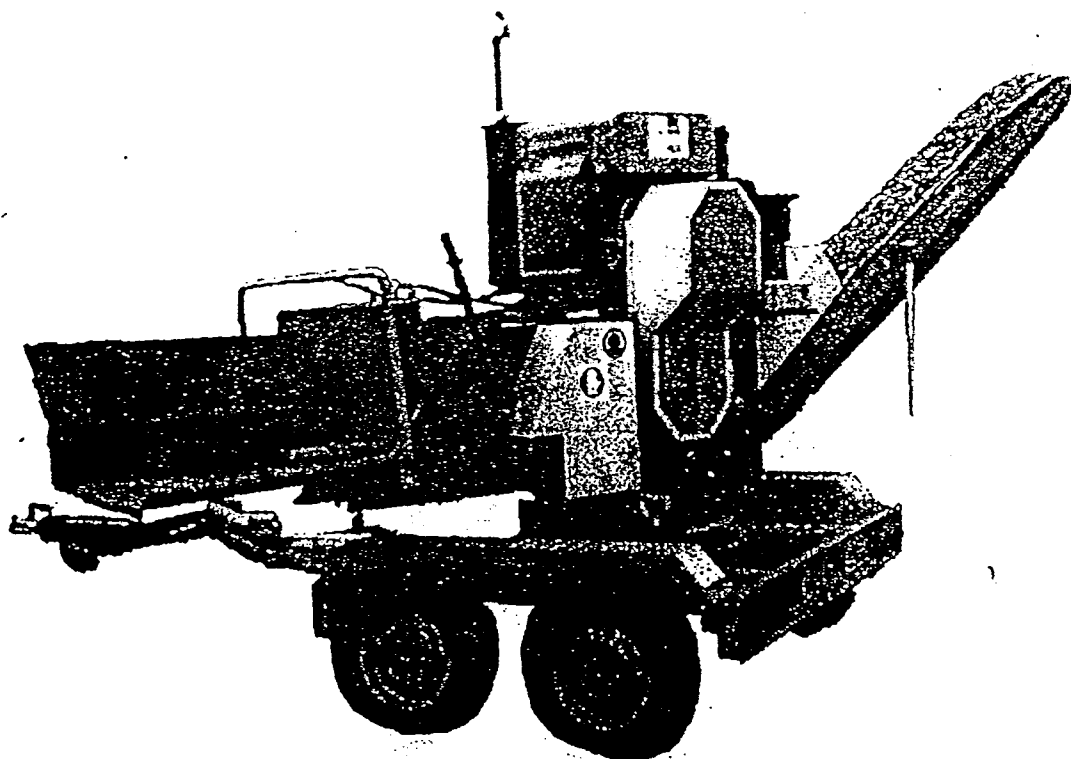


pezzolato

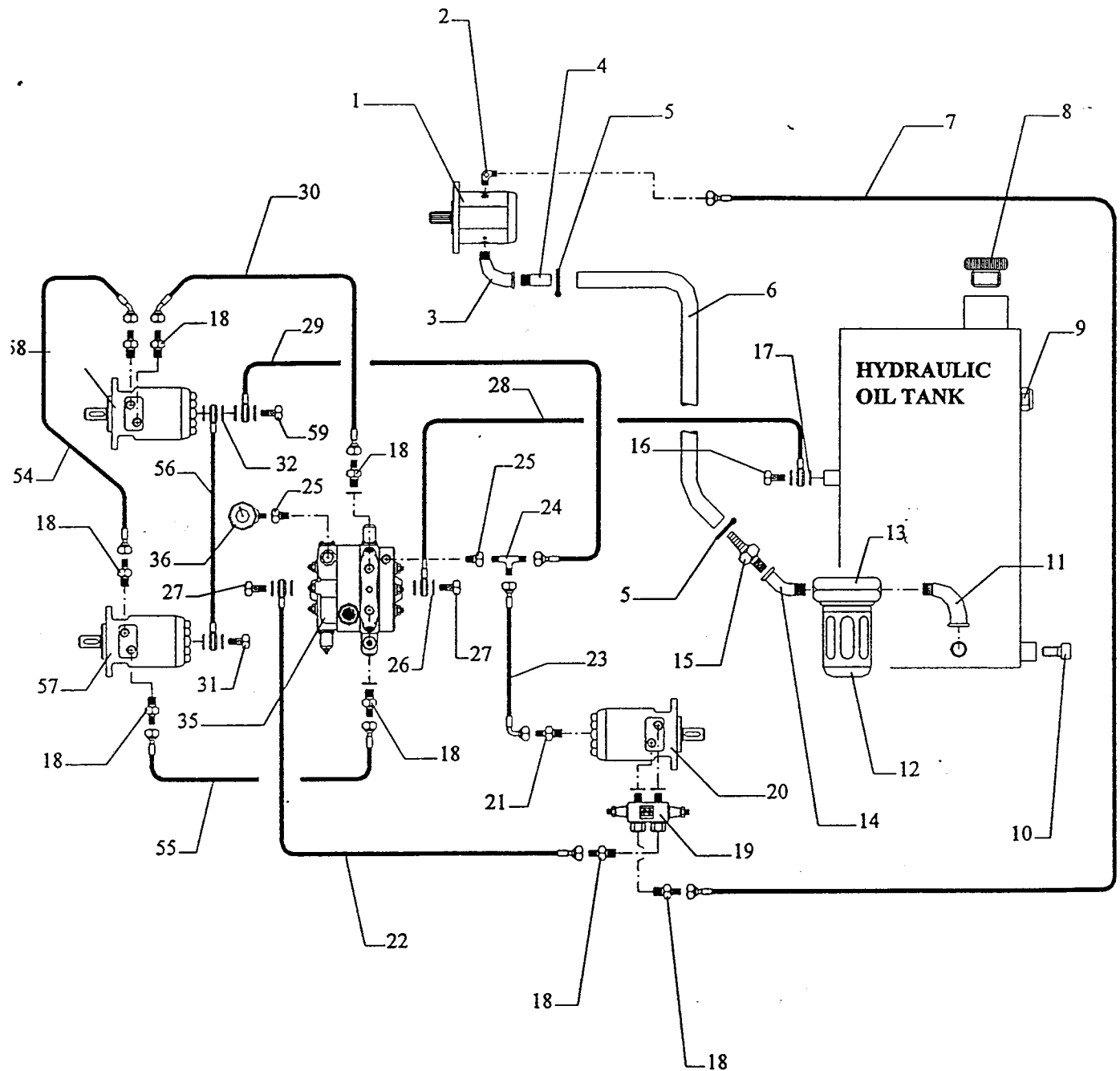
Pezzolato houtversnipperaar

ONDERDELENBOEK

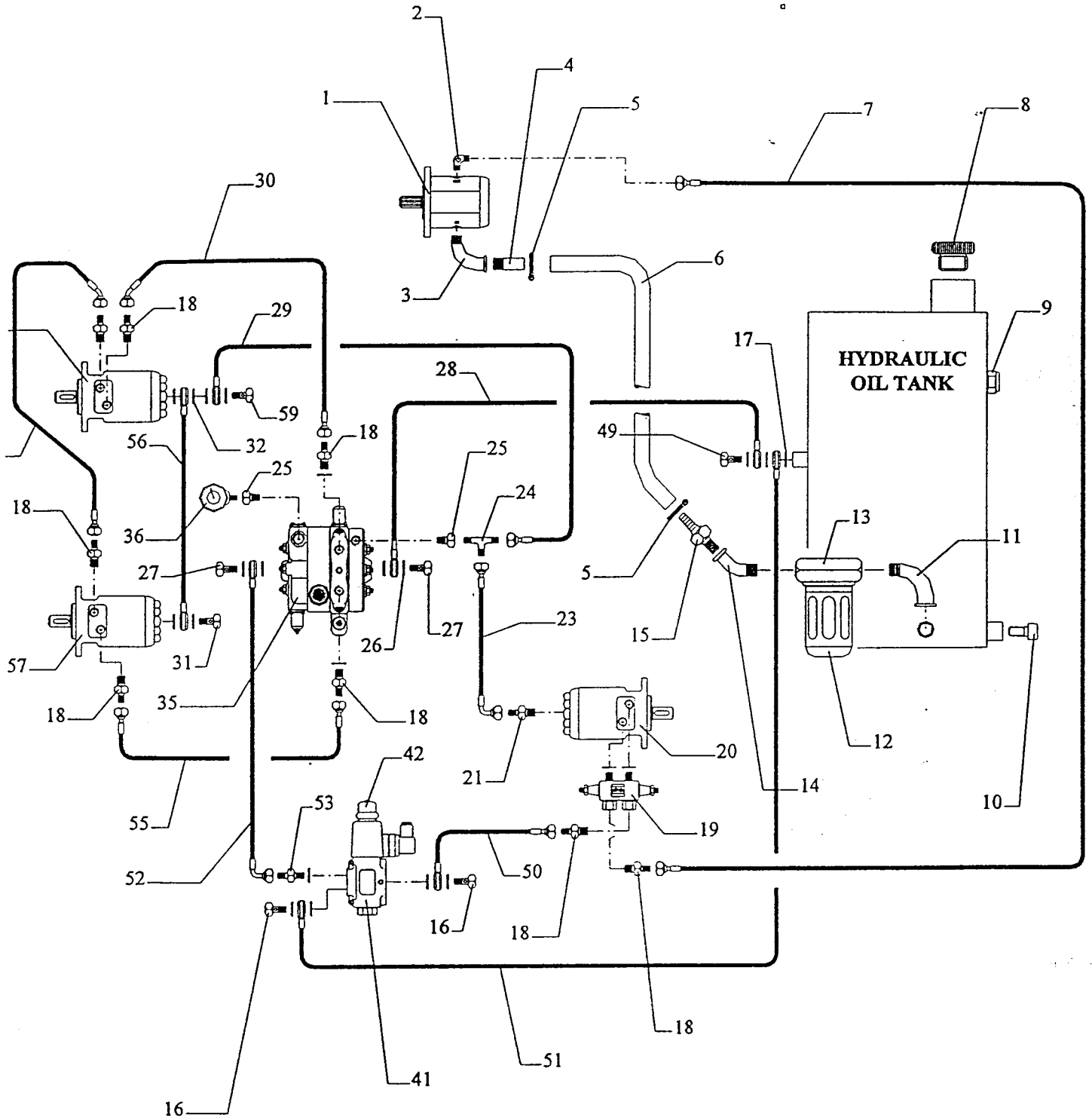
K 4000/150



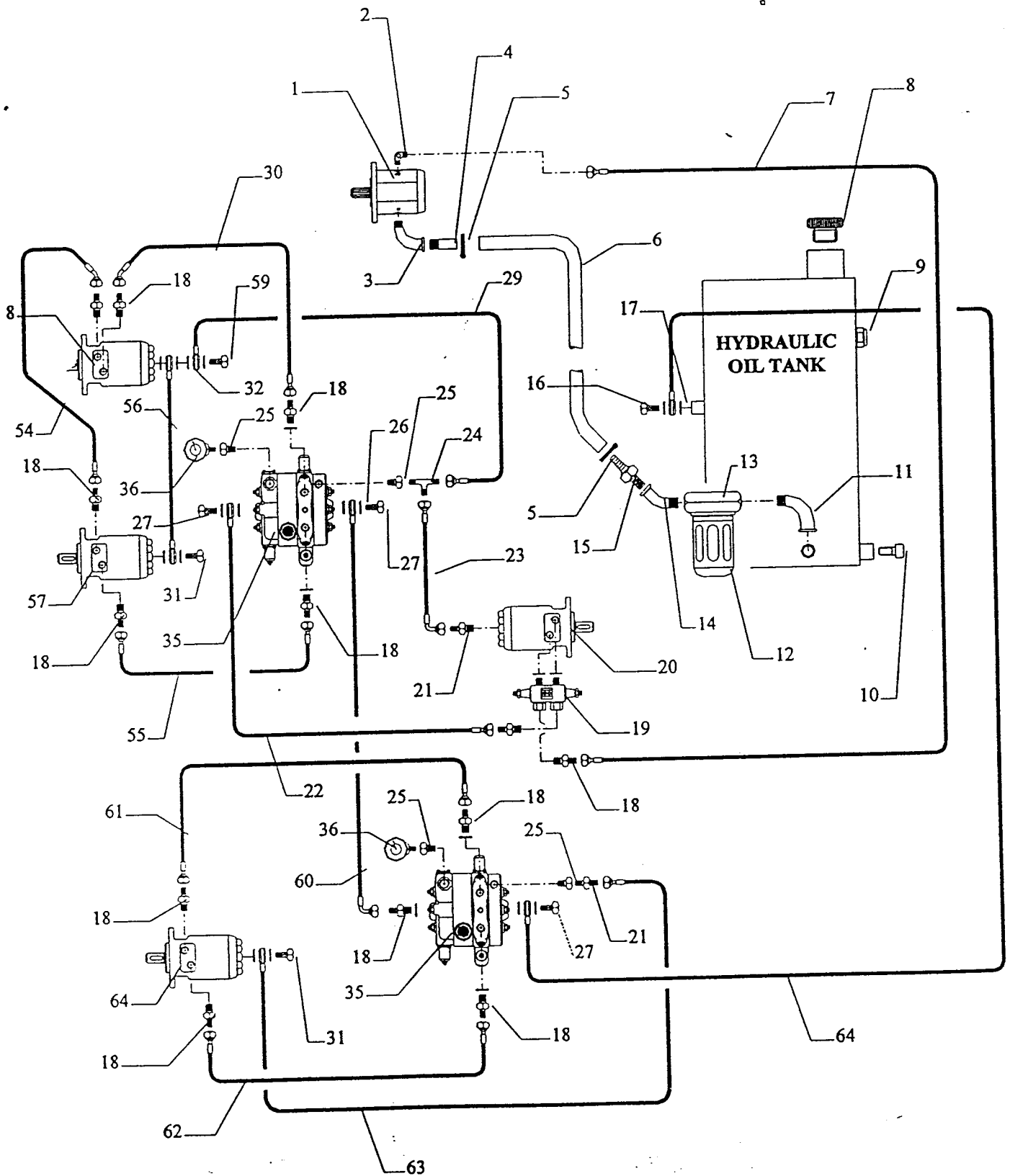
Hydraulisch circuit - P.T.O.-versie zonder No stress zonder hydraulische roller



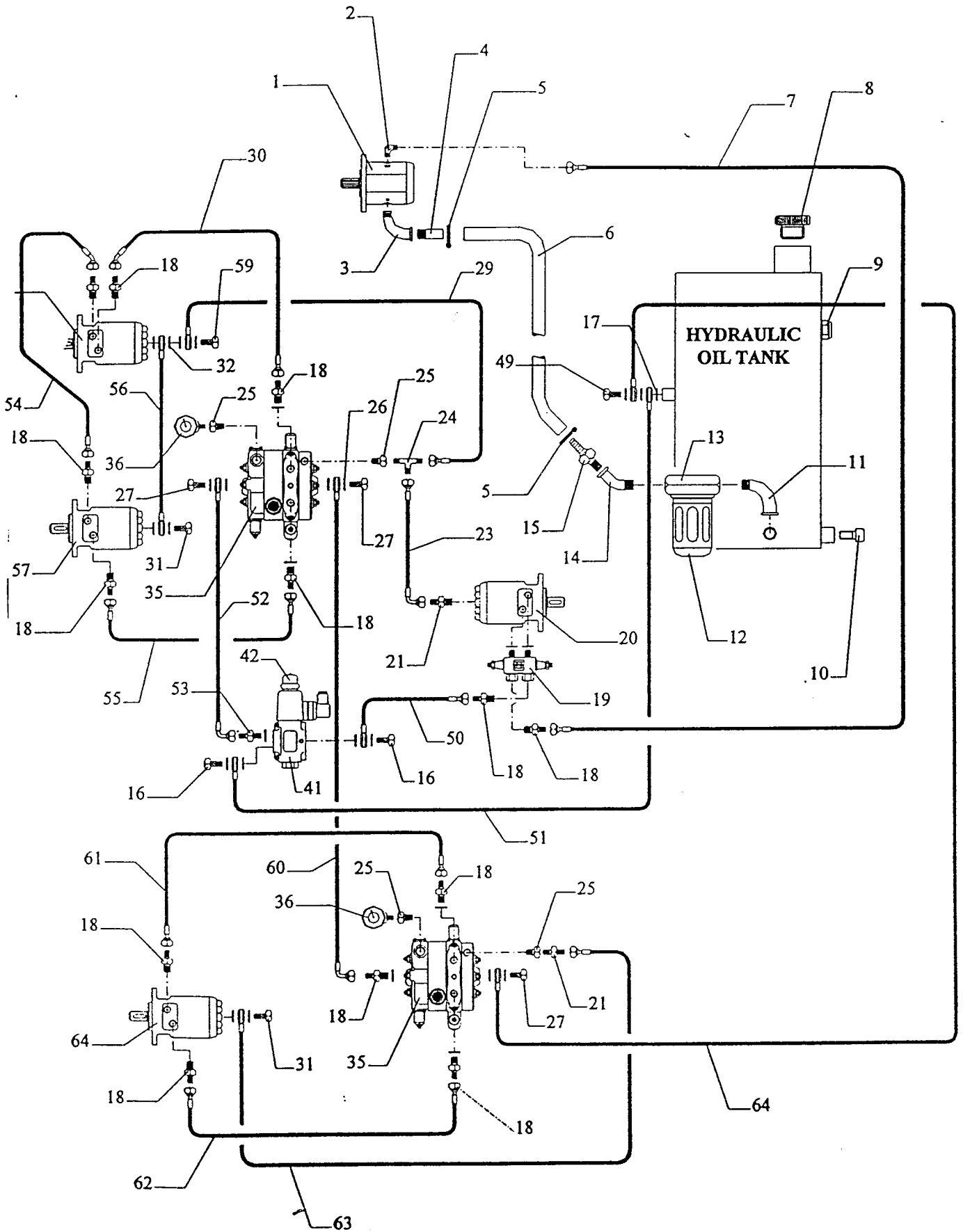
Hydraulisch circuit - P.T.O.-versie zonder No stress zonder hydraulische roller



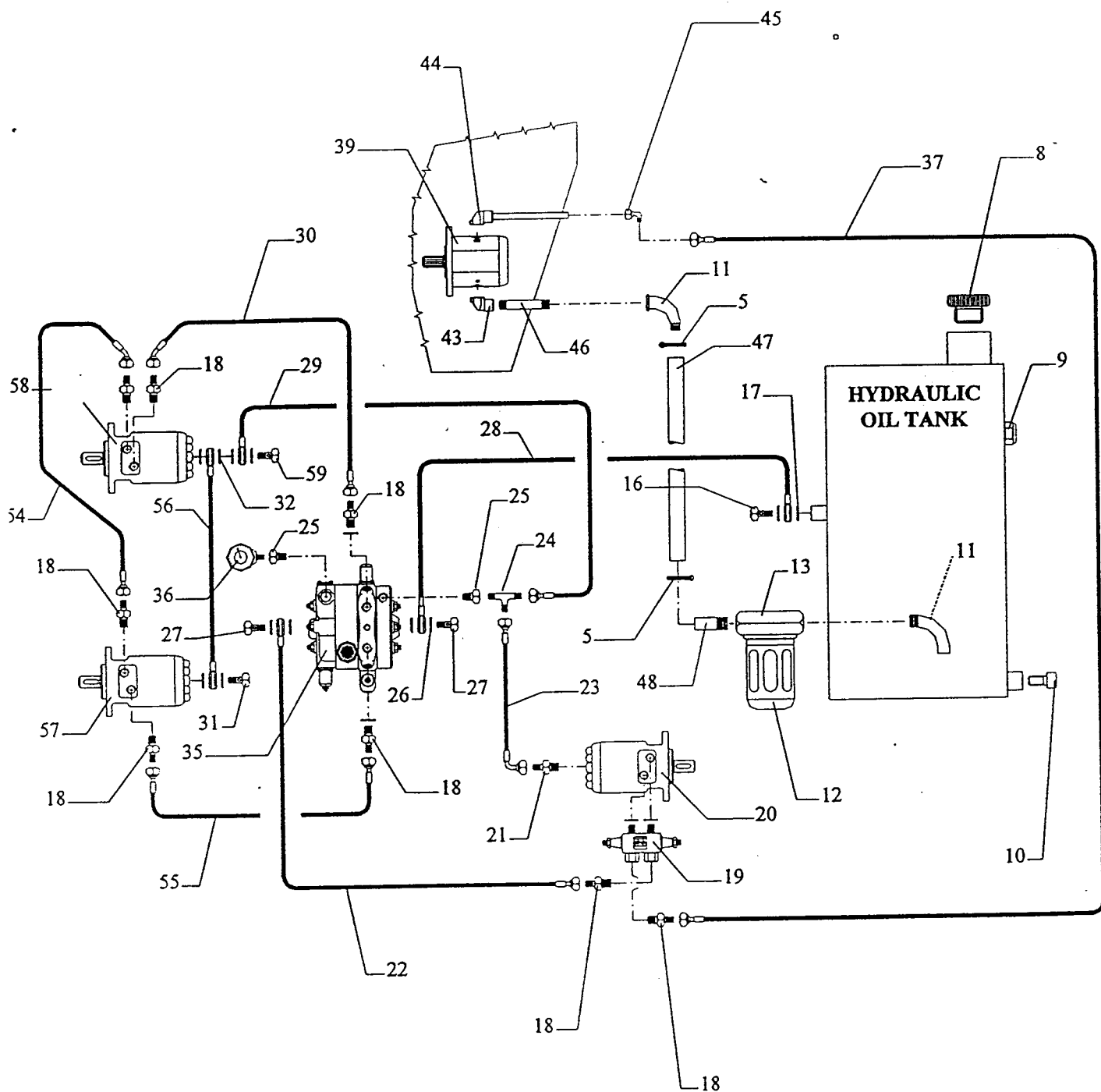
Hydraulisch circuit - P.T.O.-versie zonder No stress zonder hydraulische roller



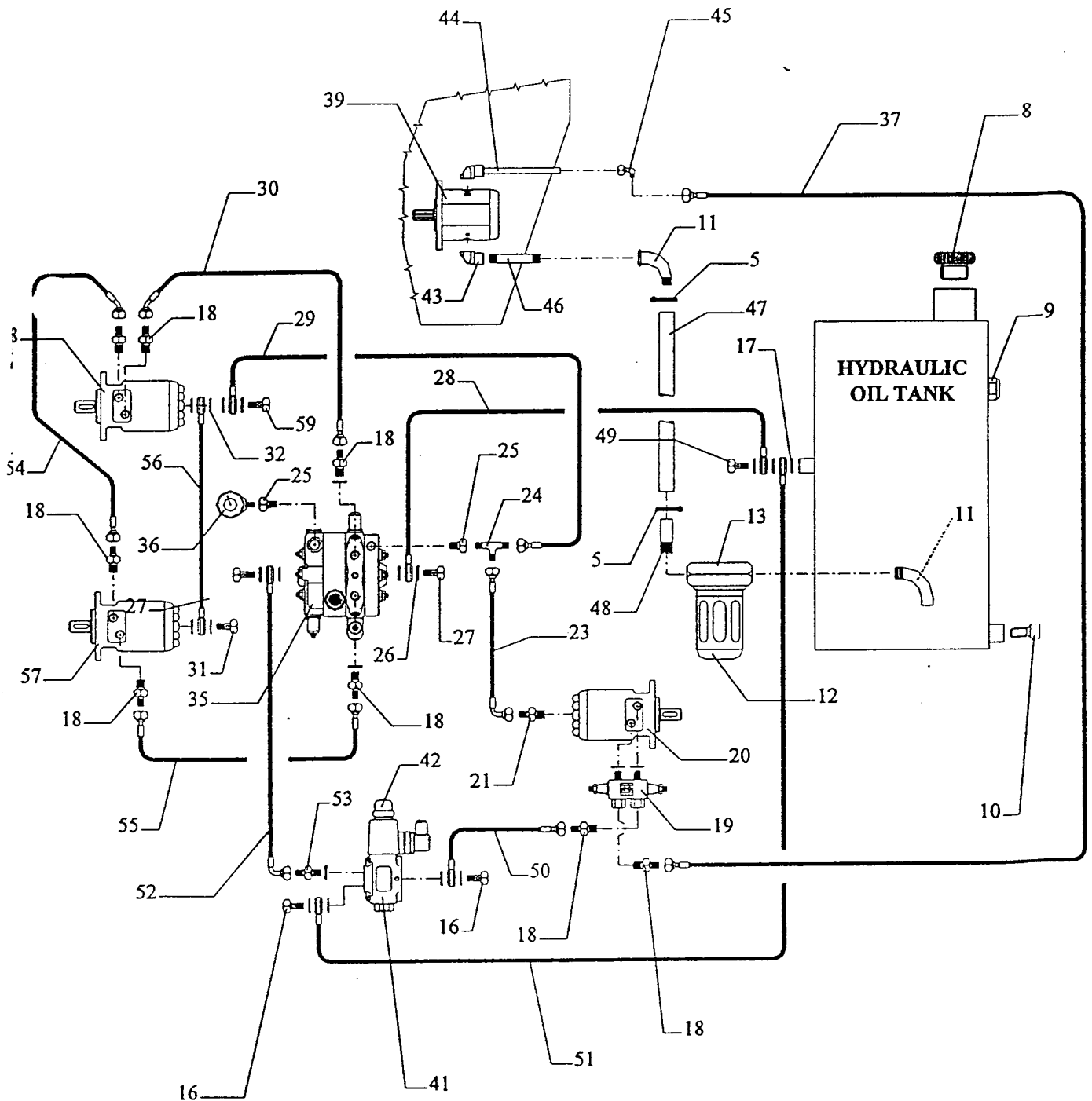
Hydraulisch circuit - P.T.O.-versie zonder No stress zonder hydraulische roller



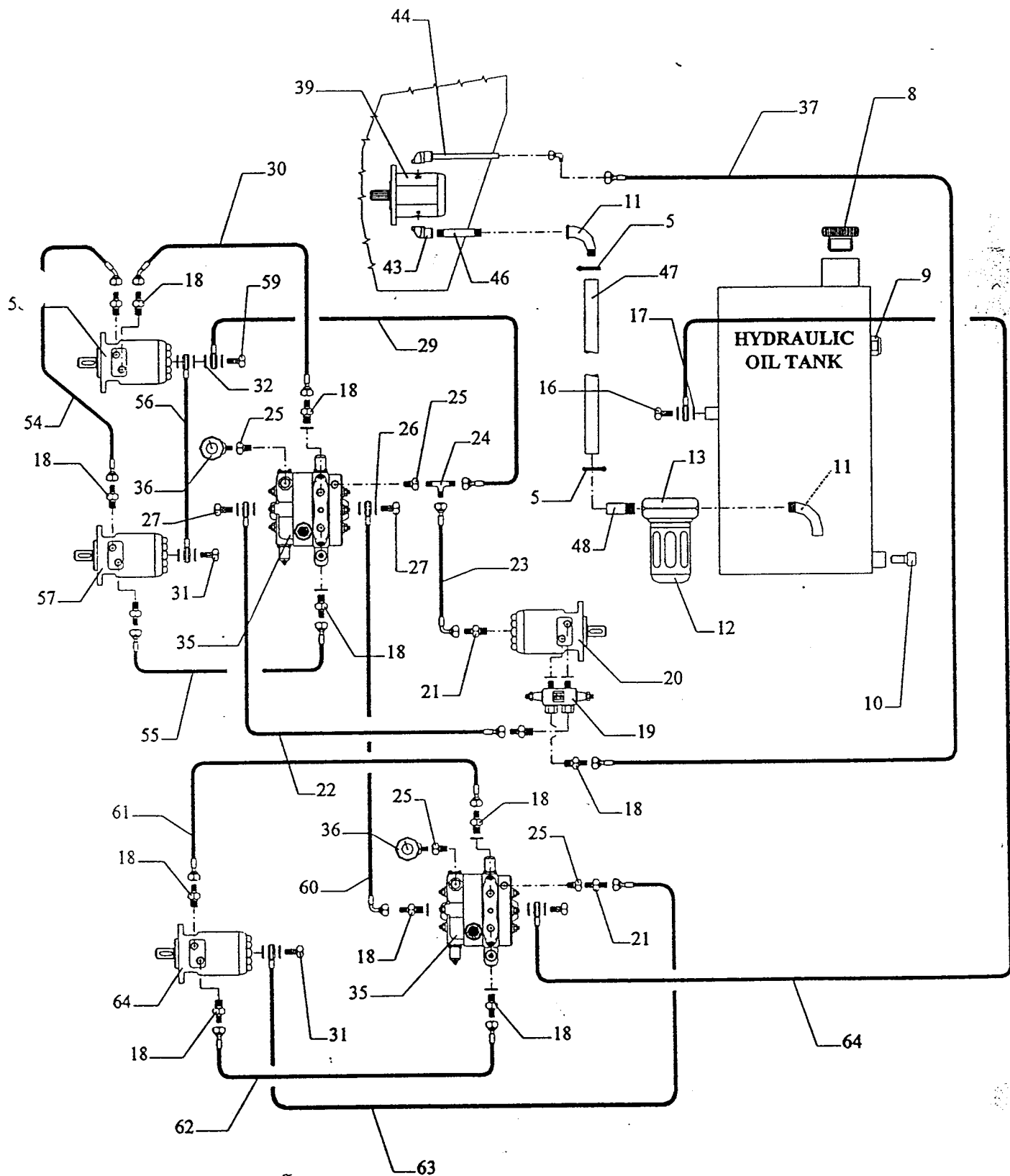
Hydraulisch circuit - P.T.O.-versie zonder No stress zonder hydraulische roller



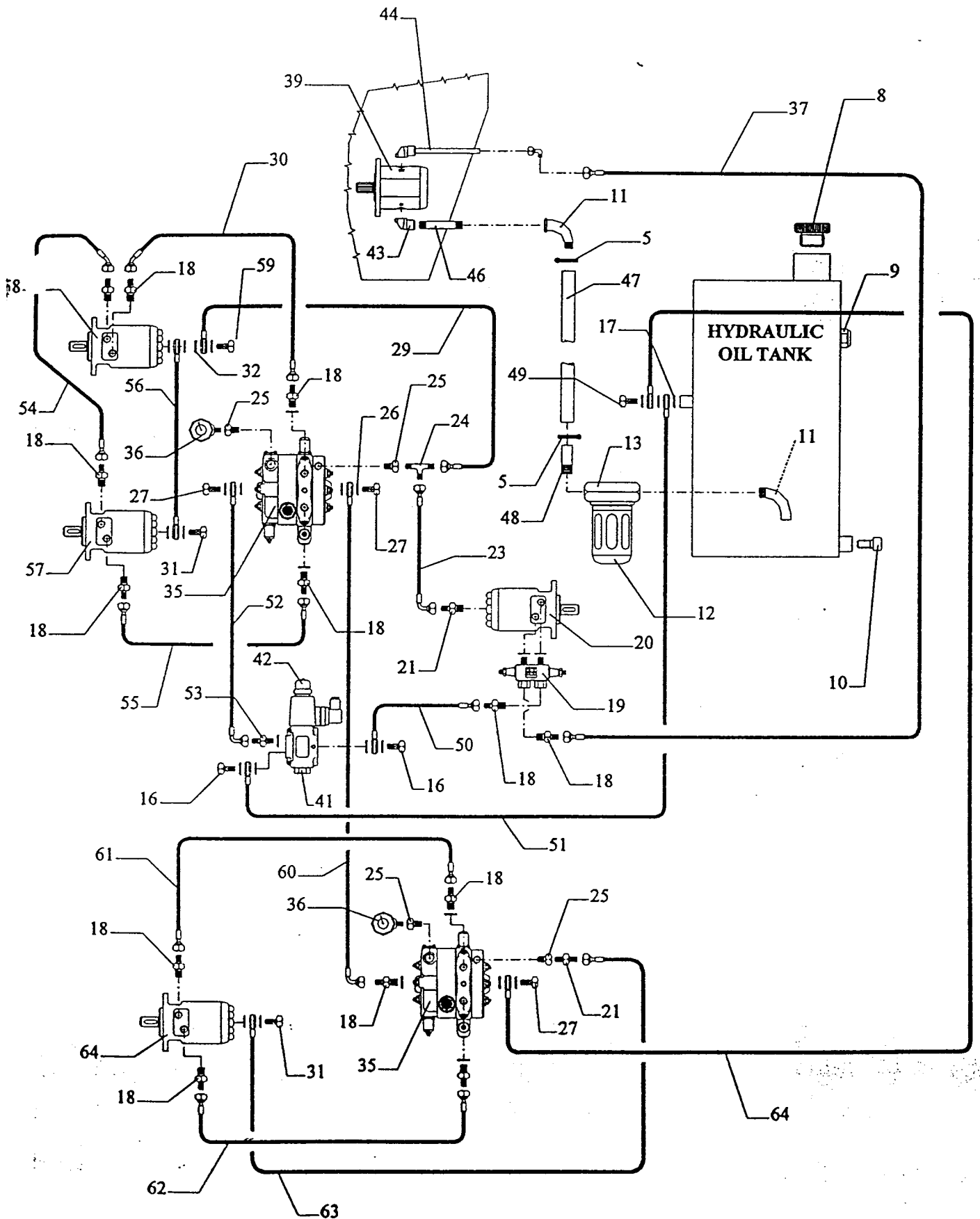
Hydraulisch circuit - gebouwd met HATZ motor - met No-stress versie zonder hydraulische roller



Hydraulisch circuit - gebouwd met HATZ motor - met No-stress versie zonder hydraulische roller



Hydraulisch circuit - gebouwd met HATZ motor - met No-stress versie met hydraulische roller



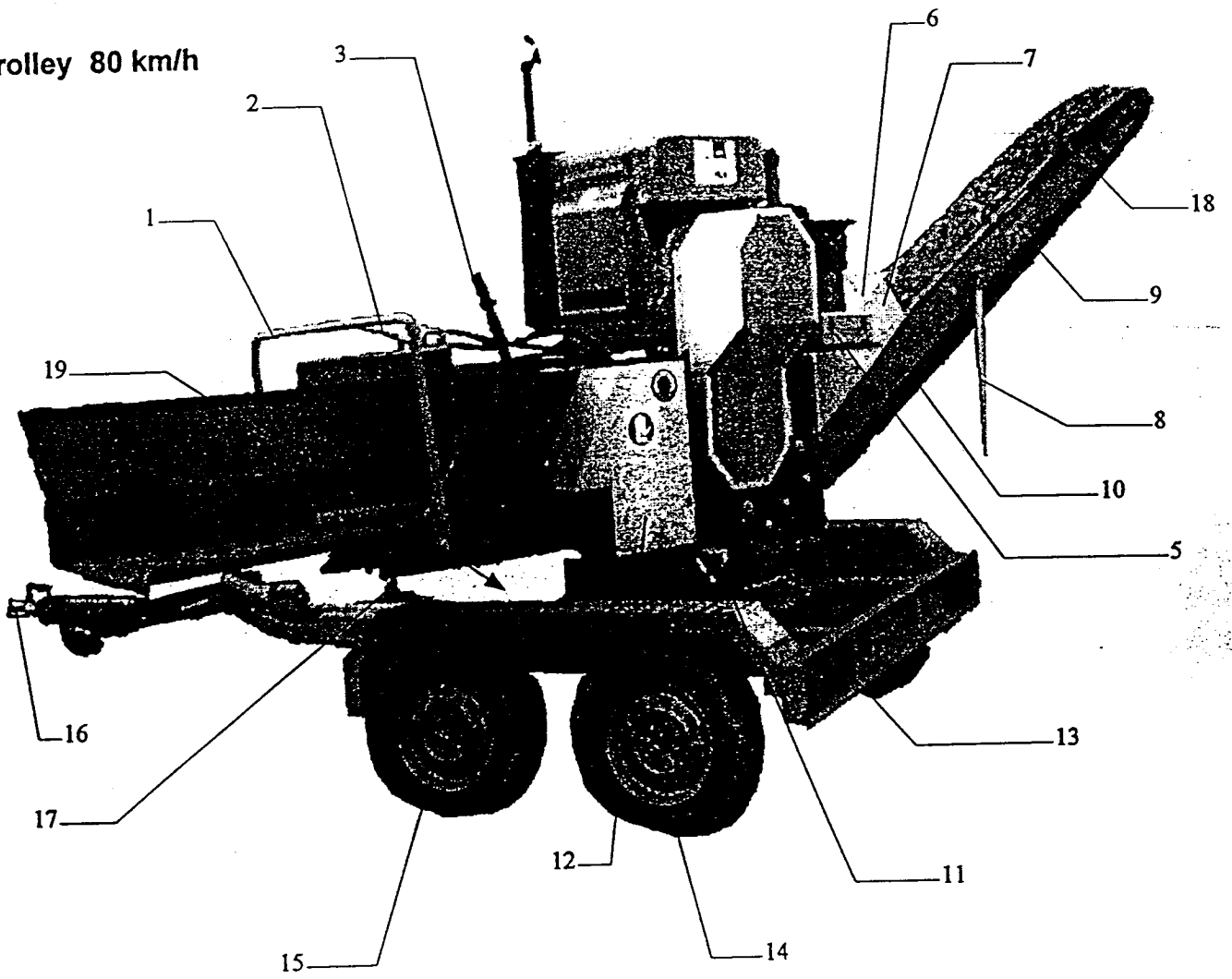
Onderdelenlijst

POS	CODE	DENOMINATION
1	0418210011	Lamborghini MLPD/G 205 C hydraulic oil pump
2	0255001901	3/8" L Male adapter
3	0255000606	90° M - F GF 1/2" Curve
4	0255003006	1/2" Connector
5	0255005501	Pipe tie
6	0421000010	Suction pipe RAPISARDA OIL 5SL D. 19
7	0420002208	Flex pipe R2K 3/8" FD 3/8" + FD 3/8" L= 2000
8	0255005003	Oil cap MINITOR 1 1/4" MINITOR TCLS / Z6G
9	0255005102	Oil level cap 3/8" MINITOR
10		Screw T.C.E.I M10 x 20
11	0255000601	90° M 3/4" - F 3/4" Curve
12	0410100032	Oil filter cartridge CS 50 MR 25 - A
13	0410100030	Complete filter MPS 50.0 P 25 AGS
14	0255000620	45° M - F GF 3/4" Curve
15	0255003002	Connector 3/4" for pipe ø 19
16	0255002502	Single socket screw 3/8"
17	0255005102	Copper washer 3/8"
18	0255002103	Reduction nipple M 1/2" - M 3/8"
19	0408010012	Security valve (70 bar Set) VAF 0,8 /B
20	0414210002	S.I. AR 100 NS 25 Hydraulic motor
21	0255002009	Nipple M 1/4" x M 1/4"
22	0420002209	Flex pipe R2K 3/8" FD 3/8" + H 1/2" L= 2850
23	0420001070	Flex pipe R1T 1/4" F90° 1/4" + FD 1/4" L= 2950
24	0255001801	M 1/4" T male adapter
25	0255002211	Reduction M 3/4" x F 1/4"
26	0255005103	Copper washer 1/2"
27	0255002503	Single socket screw 1/2"
28	0420002210	Flex pipe R2K 3/8" H 3/8" + H 1/2" L= 2200
29	0420000171	Flex pipe R1T 1/4" FD 1/4" + H 1/4" L= 1150
30	0420002211	Flex pipe R2K 3/8" FD 3/8" + F45° 3/8" L= 1000
31	0255002501	Single socket screw 1/4"
32	0255005104	Copper washer 1/4"
33	0414231501	S.I. AR 315 NC25 DP Feeding roller hydraulic motor
34	0420002211	Flex pipe R2K 3/8" F45° 3/8" + FD 3/8" L= 1000
35	0406106003	Distributor VALVOIL SD6 / 1
36	0412000300	300 bar MGS 10/3/A Pressure gauge
37		Flex pipe R2K 3/8" FD 3/8" + FD 3/8" L=
38		
39	0418210012	CASAPPA PLP 20.4 SO - 12B2 - LBE /BC - N Pump on HATZ engine
40	0418110012	9LD 625 -2 CASAPPA CPL 5.7 S/AF Pump on LOMBARDINI engine
41	0408040003	VALVOIL DFE 5/3 Switch valve
42	0518000104	DFE 5/3 12V DC Solenoid coil

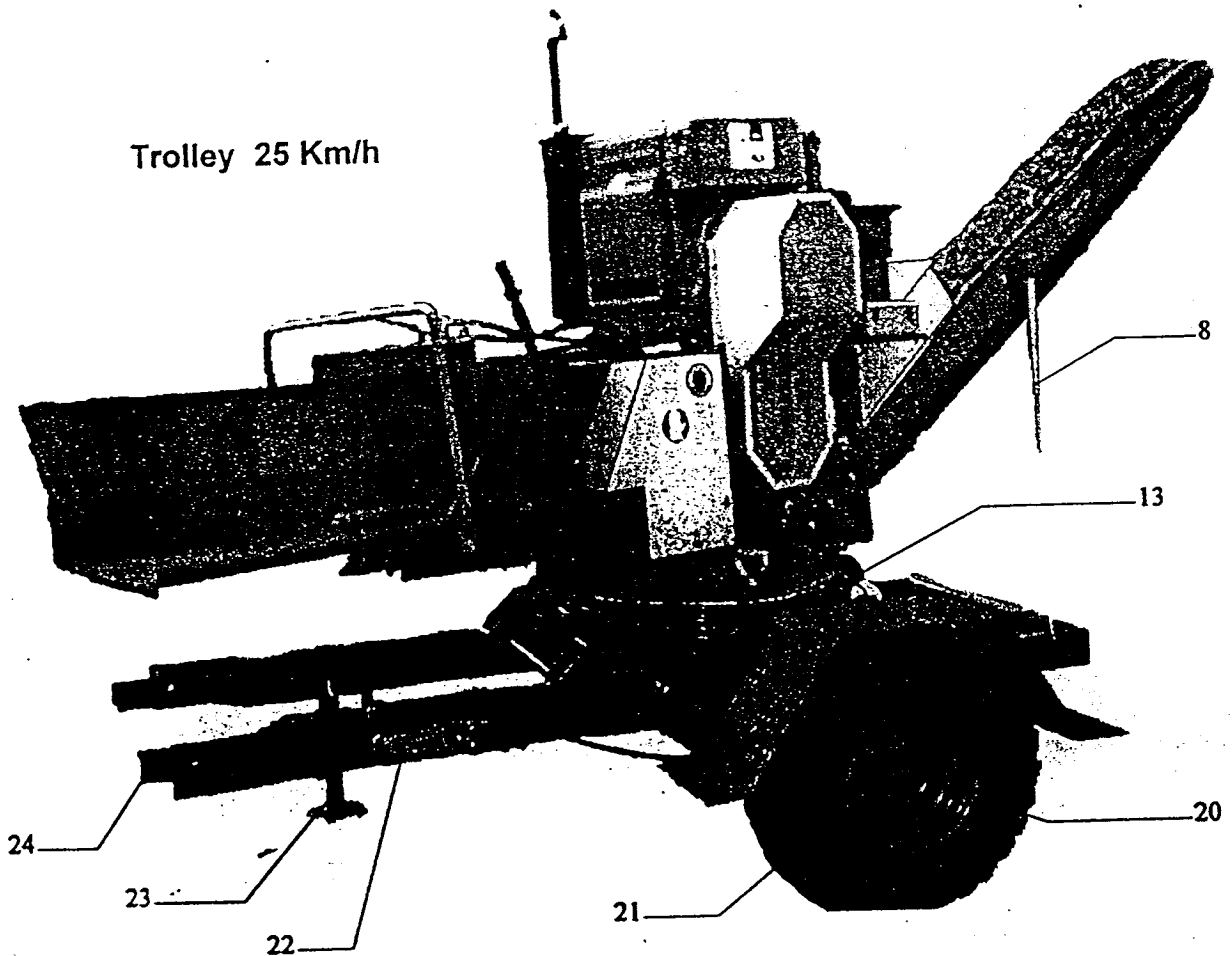
POS	CODE	DENOMINATION
43	0419000010	CASAPPA 2GB34 Suction hose
44	0419000013	Sending hose with pipe extension $\Phi 15$
45	0255000105	Connection 3/8" for pipe $\varnothing 15$
46	0255001607	Extension 3/4" L= 80
47	0421000010	Suction pipe RAPISARDA OIL 5 SL D 25
48	0255003007	Connector 3/4"
49		Double socket screw 3/8"
50		Flex pipe R2K 3/8" FD 3/8" + H 3/8" L=
51		Flex pipe R2K 3/8" H 3/8" + H 3/8" L=
52		Flex pipe R2K 3/8" H 1/2" + F90° 3/8" L=
53	0255002001	Nipple M 3/8"- M 3/8
54		Flex pipe R2K 3/8" F45° 3/8" + FD 3/8" L=
55		Flex pipe R2K 3/8" FD 3/8" + FD 3/8" L=
56		Flex pipe R1T 1/4" H 1/4" + H 1/4" L=
57	0414216001	Feeding chain hydraulic motor AR 160 NC 25
58	0414220001	Upper roller hydraulic motor OMR 200
59	0255002601	Double socket screw 1/4"
60		Flex pipe R2K 3/8" H 1/2" + F90° 3/8" L=
61		Flex pipe R2K 3/8" FD 3/8" + FD 3/8" L=
62		Flex pipe R2K 3/8" FD 3/8" + FD 3/8" L=
63		Flex pipe R1T 1/4" H 1/4" + FD 1/4" L=
64	0414220001	OMR 200 Woodchipper feeding roller hydraulic motor
65		
66		
67		
68		
69		
70		

Aggregaat machine - motor versie -

Trolley 80 km/h

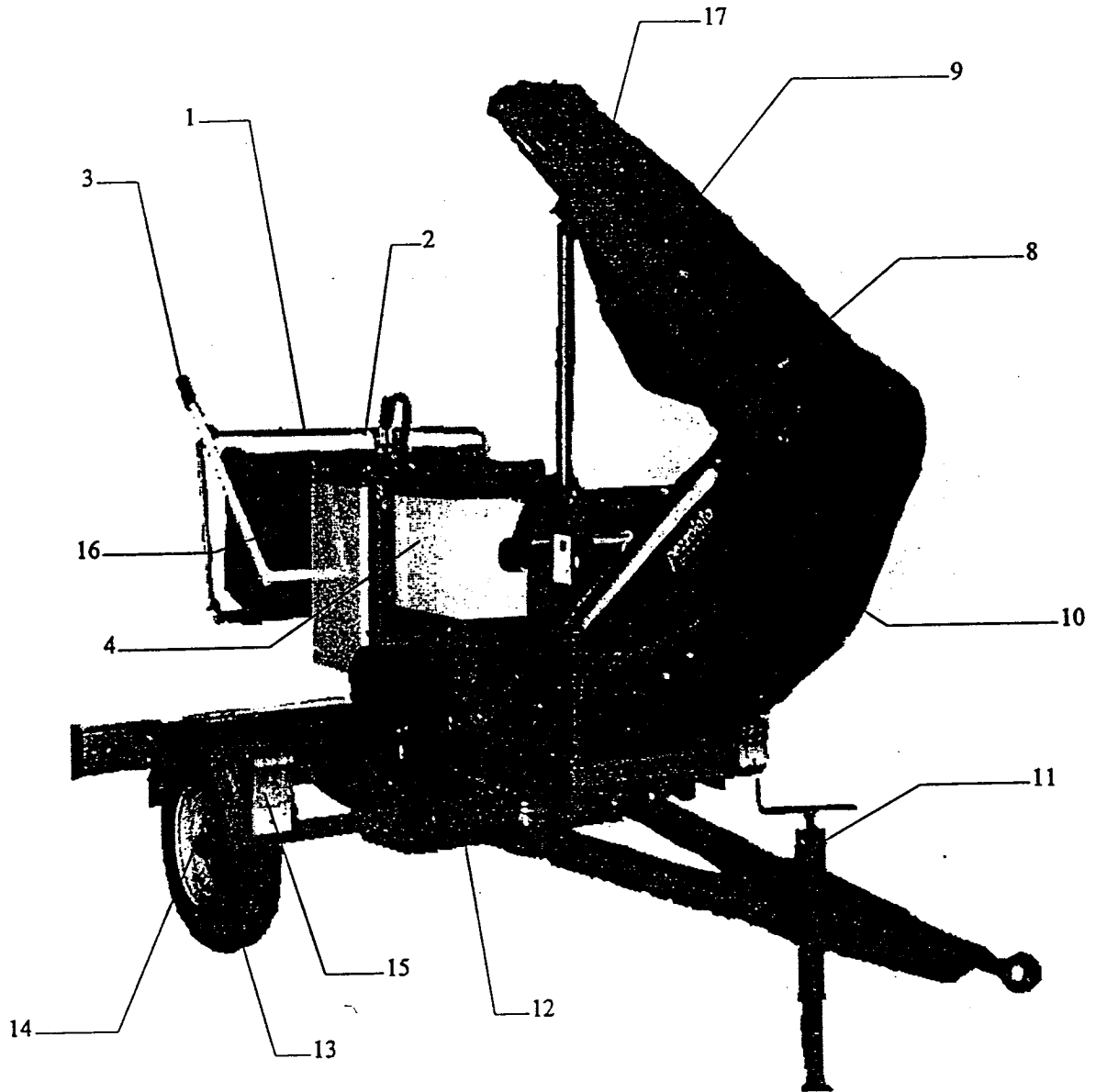


Trolley 25 Km/h



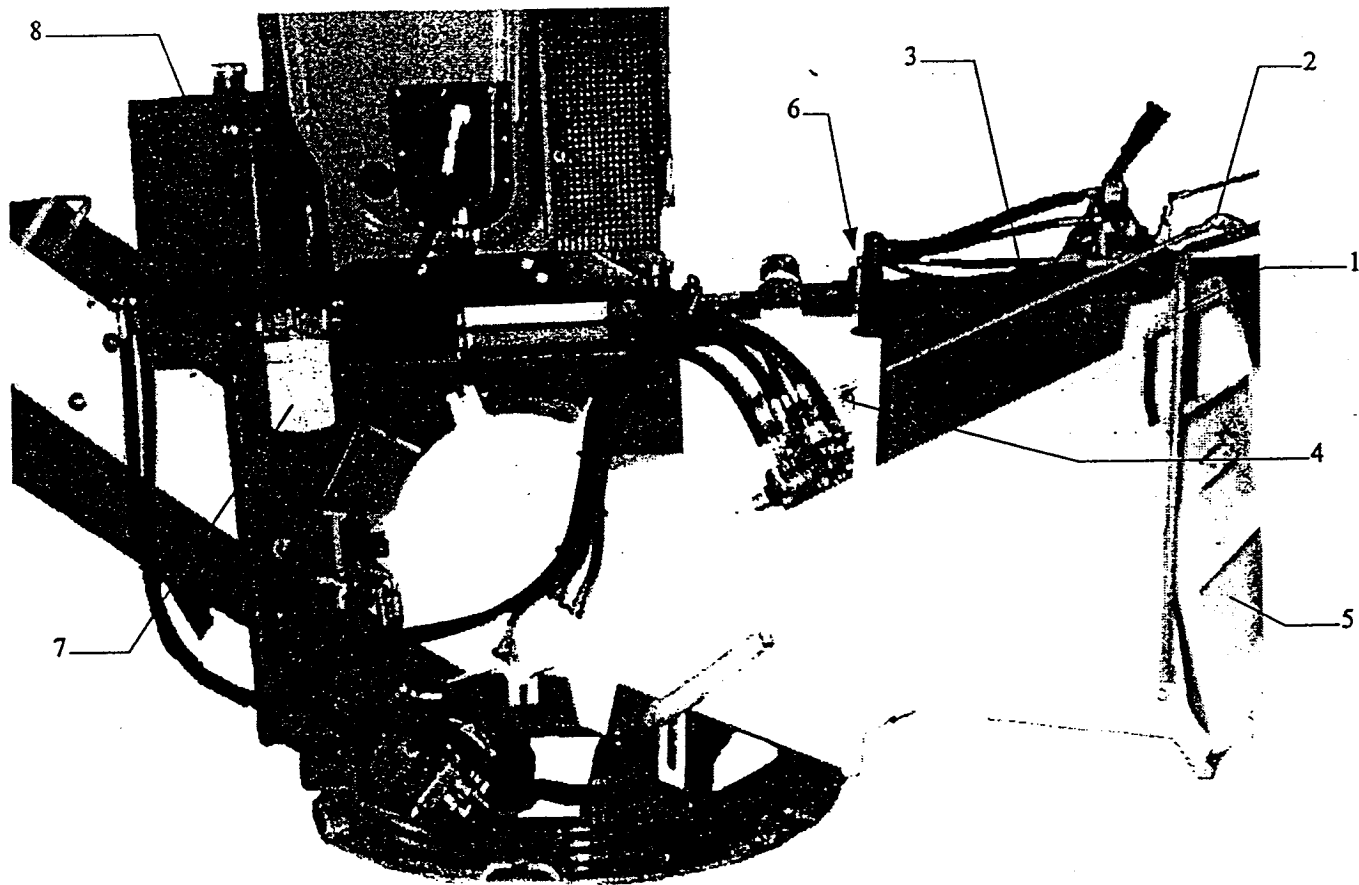
POS	CODE	DENOMINATION
1	05800800	Distributor control handle
2	0251001002 0214010001 0799140001	Threaded bar M8 Jointed head M8 Distributor pin
3	0235400001	Handle PVC d. 25 / 27
4		
5	0515000100 0511000001 0216000011	NO - STRESS with hour meter NO - STRESS Box Box antivibrating bearing box 24 x 20 6MA
6	02903500	Out - put conveyor band upper guard
7	02902700	Out - put conveyor band side guards
8	05800200	Turning over out - put rubber band handle
9	05100600	Out - put conveyor band upper structure
10	05100500	Out - put conveyor band lower structure
11		360° revolving platform complete locking handle
12	02900502	Guard
13	0232090000	ø 900 complete 360° revolving platform
14	0233001005	Wheel 155/70 R13 4 fori 75 Ton 80 Km/h
15	0308030100	Axle 850 - 1637 98x4 = 1270
16	0309020100	Adjustable draw - bar 161 VB (1000 - 1600 Kg)
17	0309040002	Jockeywheel ALKO 240 x 70
18	0321000102	Out - put rollers band guide 20° ø 60 x 180
19	0309050001	Locking wedges
20	0308050100	Q50/40 5F Wheel hub with brake
21	0233002012	Single axle trolley wheels 25 Km/h 10.0 / 80 5 Bores FAD
22	0309050003 0212300003	Hand brake Cod. 30011 Brake cable LG. 3250
23	0310003002	Screw jack Q50 x 500
24	0726010000	25 Km/h towing up complete draw bar

Aggregaat machine P.T.O.-versie



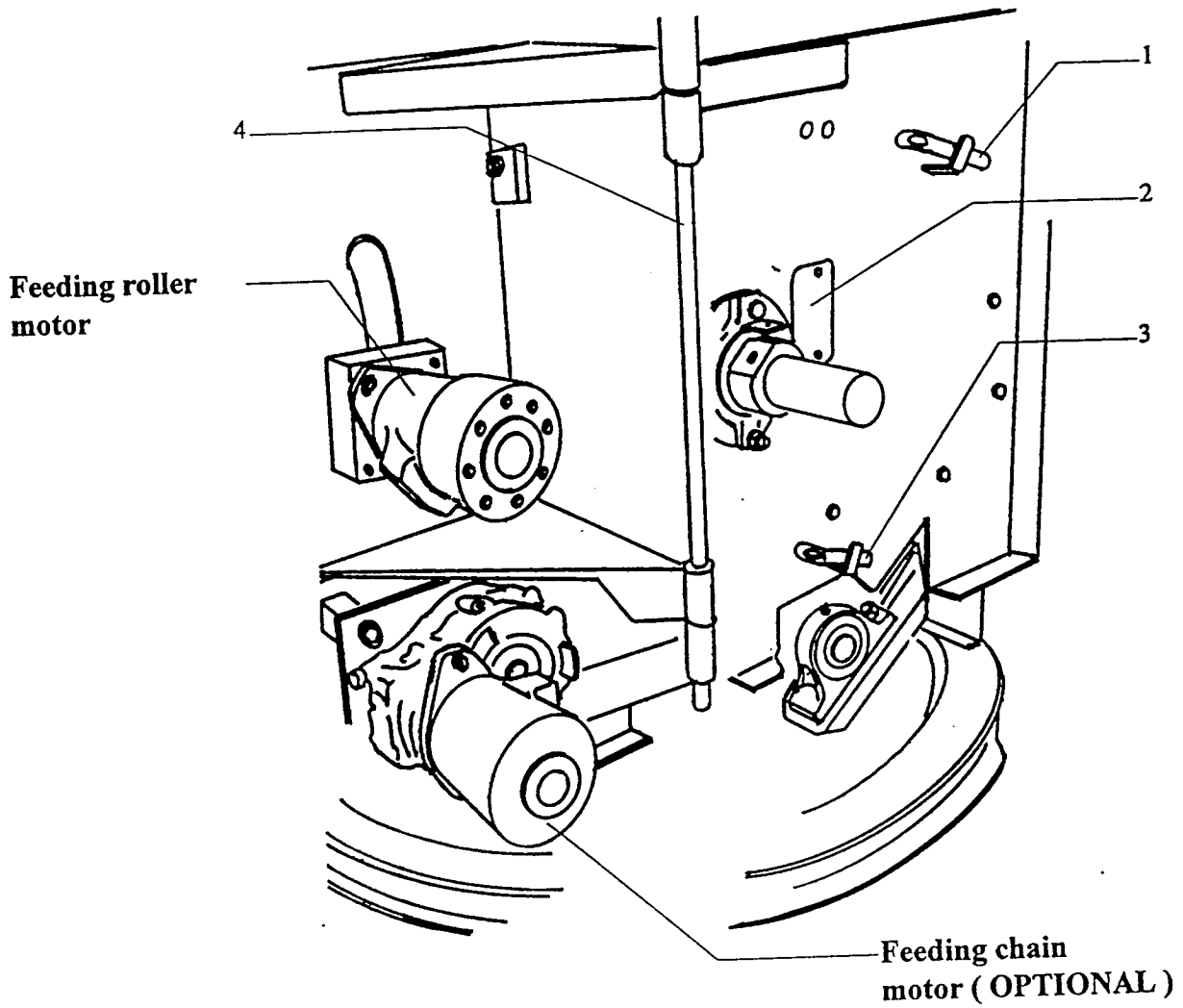
POS	CODE	DENOMINATION
1	05800800	Distributor control handle
2	0251001002	Threaded bar M8
	0214010001	Jointed head M8
	0799140001	Distributor pin
3	0235400001	Handle PVC d. 25 / 27
4		Driving belts guard
5		
6		
7		
8	05800200	Out - put conveyor turning over handle
9	05100600	Out - put conveyor band upper structure
10	05100500	Out - put conveyor band lower structure
11	0310003002	Screw jack Q50 x 500
12	0232090000	ø 900 Complete 360° revolving platform
13	0233002005	Wheel 185 / 75 R14 5 bores
14	0308010300	Wheel hub Q50 05 M16 x 1,5
15	0309050001	Locking wedges
16		Guard
17	0321000102	Out - put conveyor band support 20° ø 60 x 180

Zijaanzicht houtversnipperaar

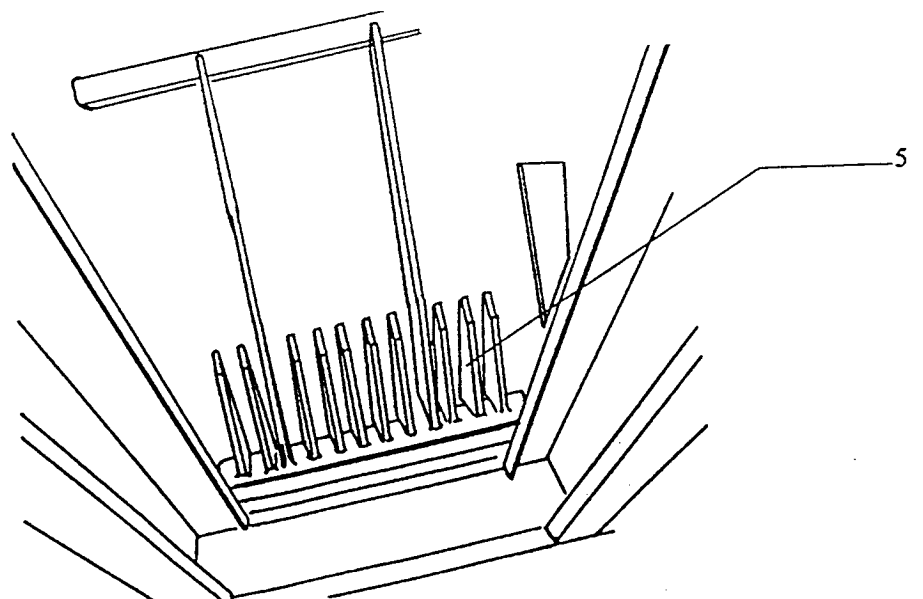


POS	CODE	DENOMINATION
1	05800700	Woodchipper control lever
2	0214010001	M8 Jointed head
3	0251001002	M8 Threaded bar
4	0799140001	Distributor pin
5	10204400	Woodchipper feeding hopper safety door
6	10000100	Hammers extraction tool
7	0410100032	Oil filter cartridge CS 50 MR 25 - A
8	0410100060	Complete oil filter with support and cartridge MPS 50.0 P25 AGS

SISE VIEW OF THE MACHINE

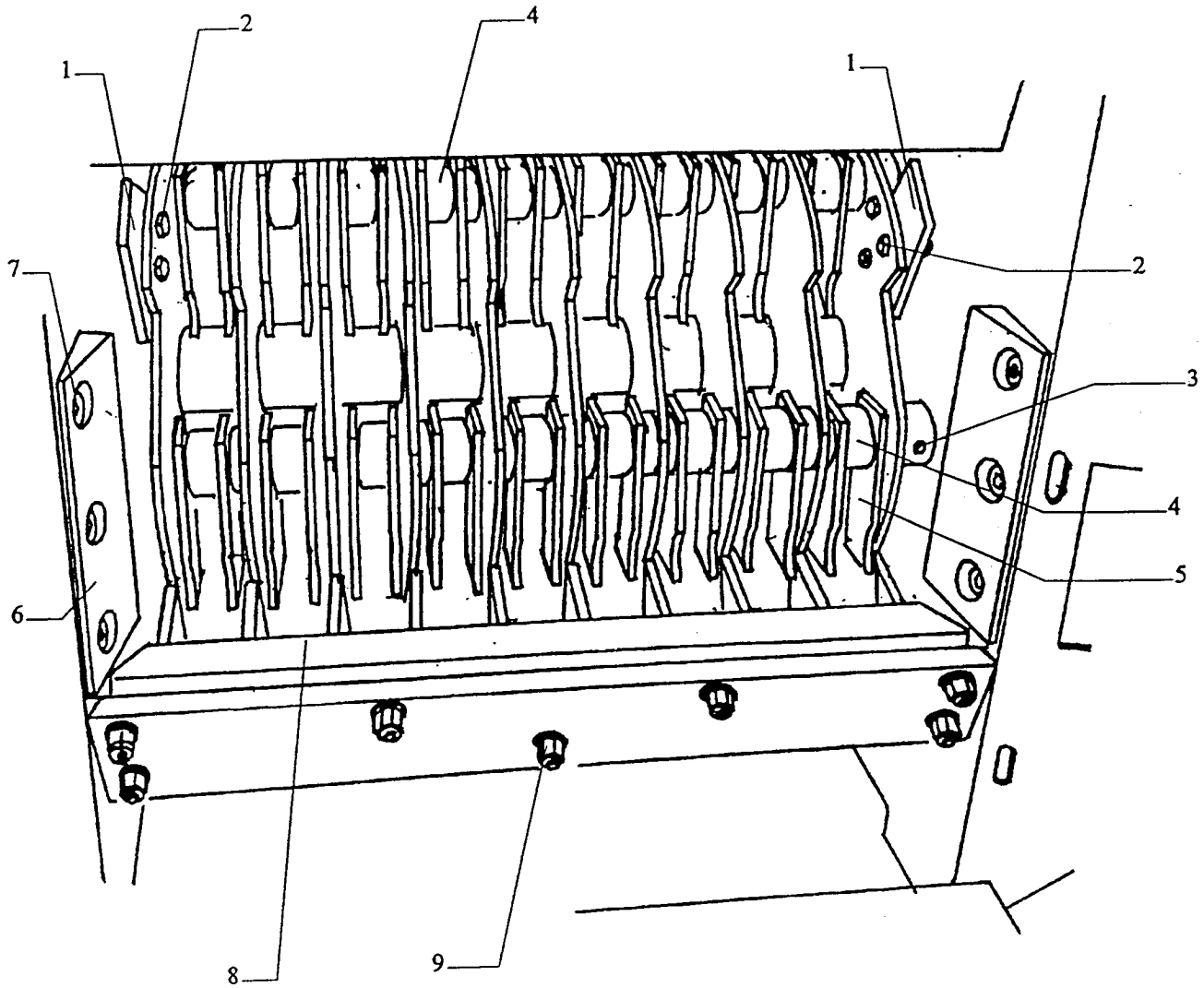


DISCHARGE HOPPER VIEW

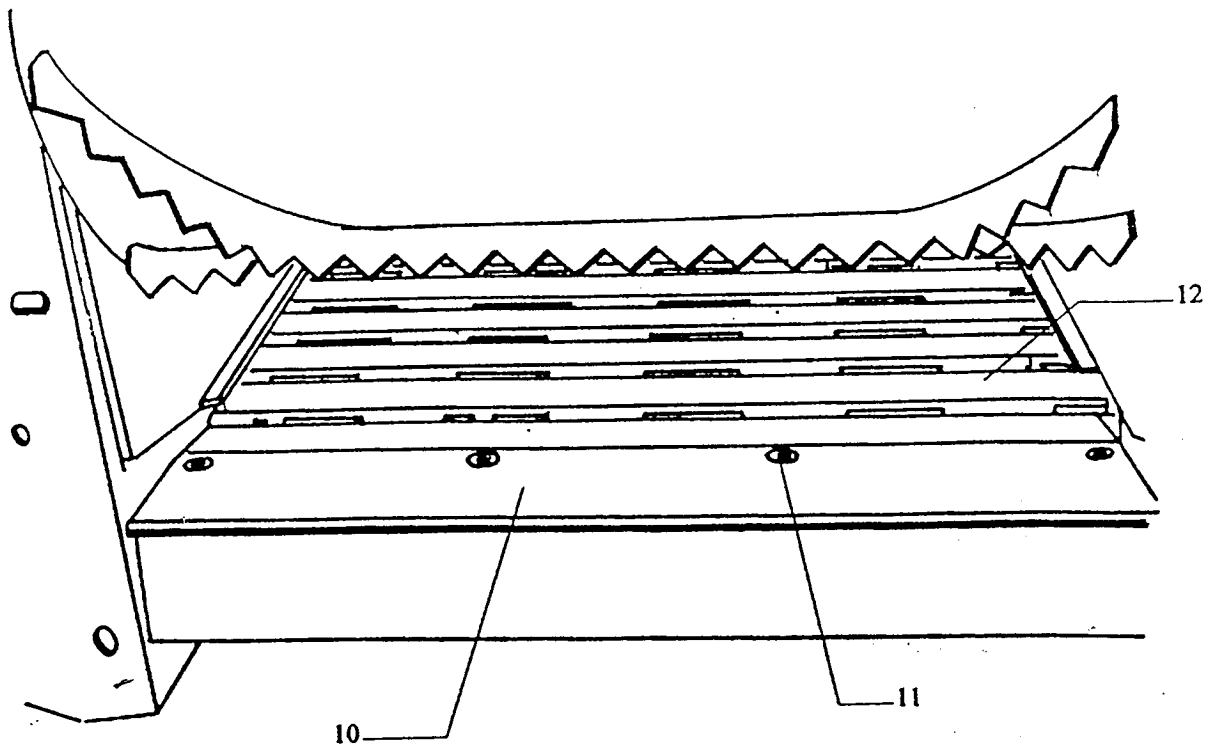


POS	CODE	DENOMINATION
1	01000100	Sieve upper pin
2		Hammers extraction pin
3	01000100	Sieve lower pin
4	01101600	Shredder feeding hopper hinge pin
5	02300300	Sieve

ROTOR VIEW FEEDING SIDE

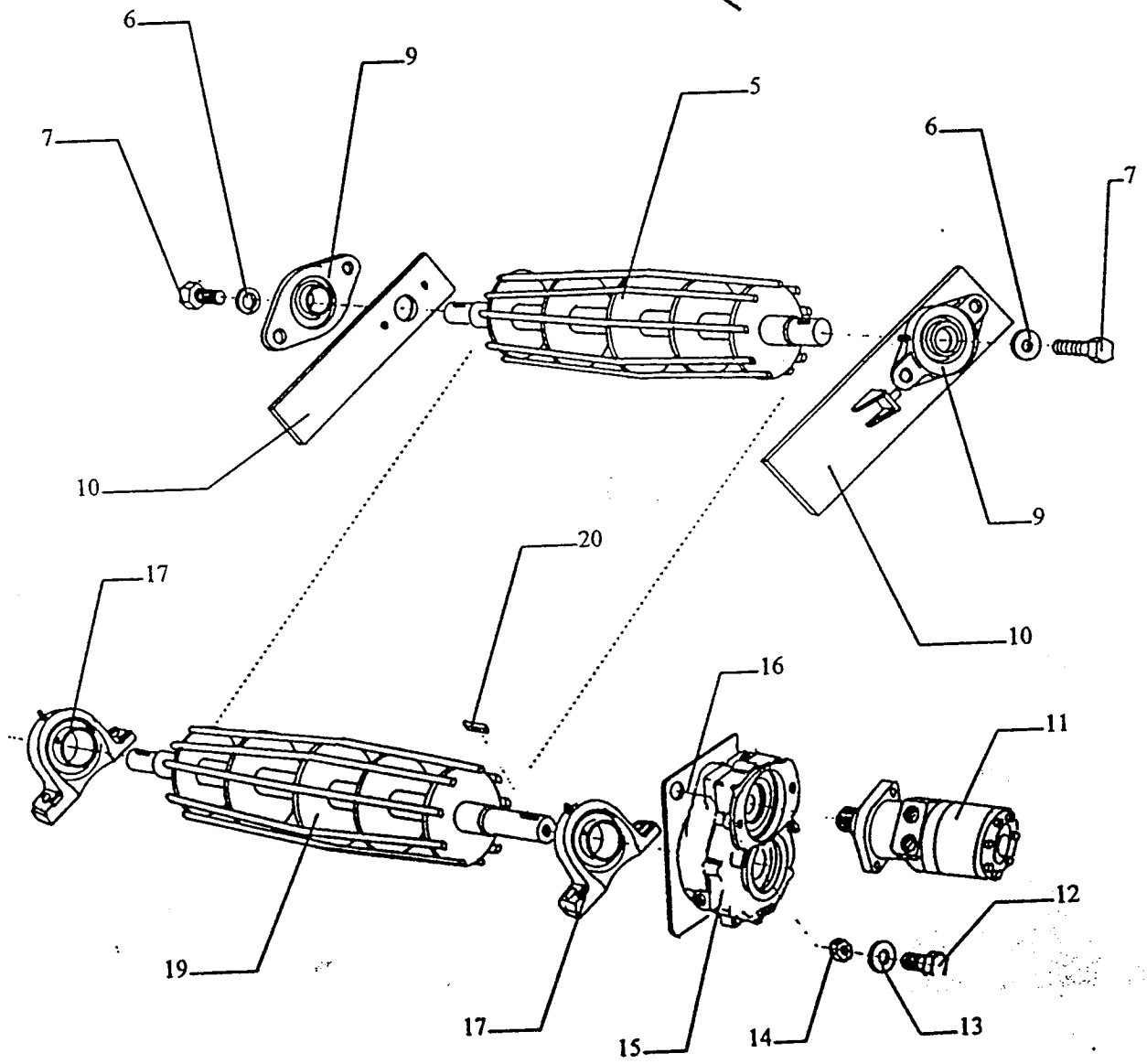
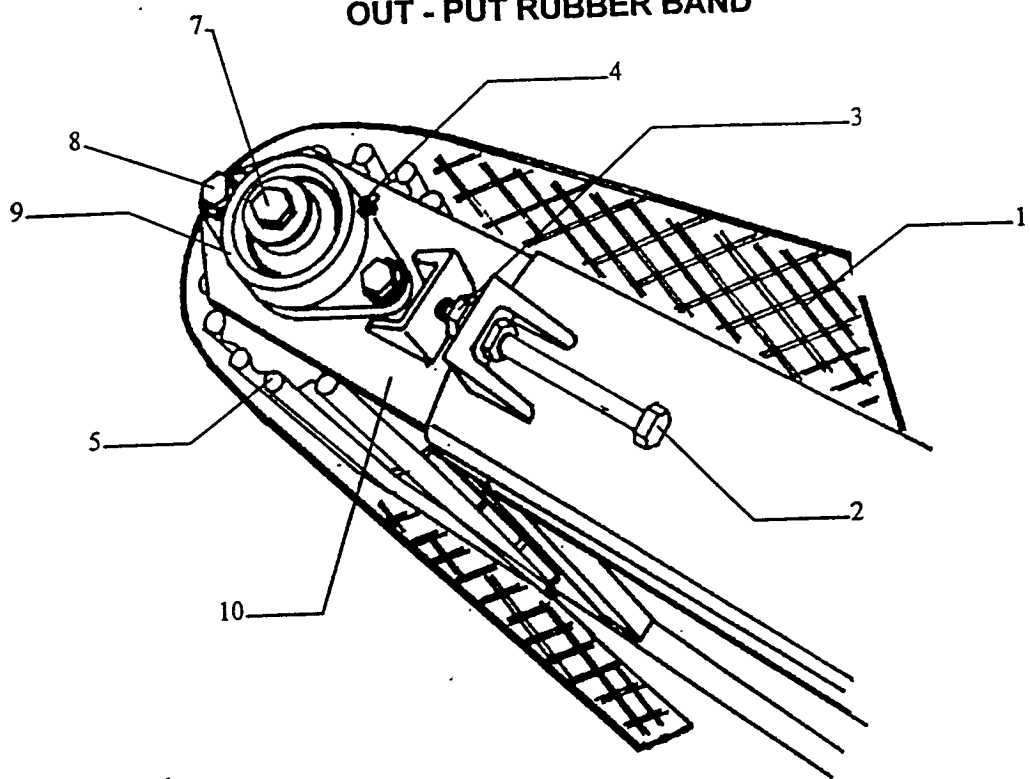


FEEDING CHAIN VIEW (OPTIONAL)



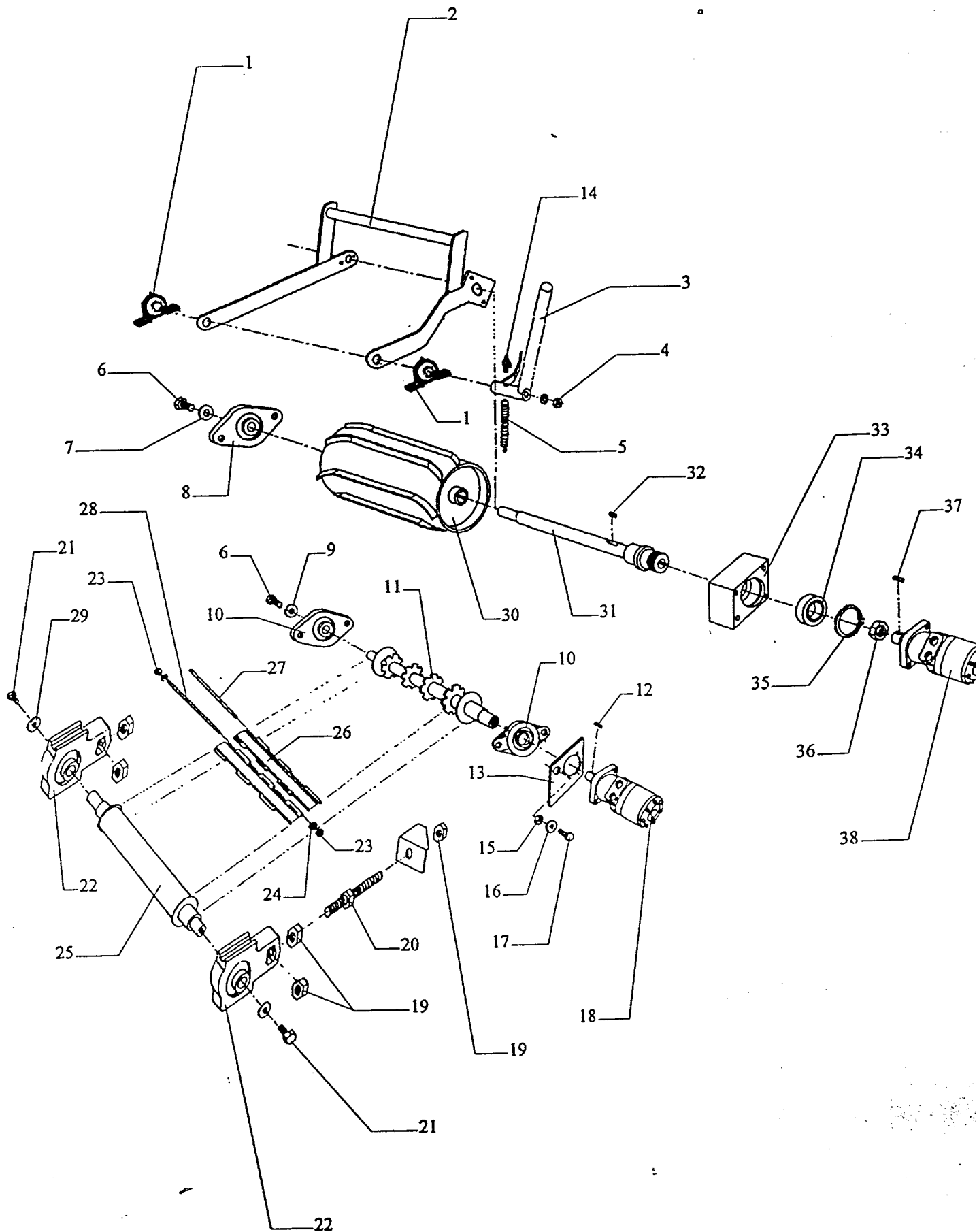
POS	CODE	DENOMINATION
1	01401300	Counter hammer
2		Screw T.E. M 10 + Lock nut M10
3		Peg for rotor locking pin \varnothing 8 L= 50
4	01901002	Hammers spacers thick = 20,6 n° 24 Parts
5	01400300	Hammers n° 48 Parts
6		In let counter hammer
7		Screw T.S.E.I. M 10 x 30
8	07000100	Comb
9		Screw T.C.E.I M 12 x 50 + Lock nut M 12
10	01400600	Feeding chain blade
11		Screw T.S.E.I. M 10 x 80
12	5040010002	Complete chain n° 36 Steps + 1 Connection pin

OUT - PUT RUBBER BAND



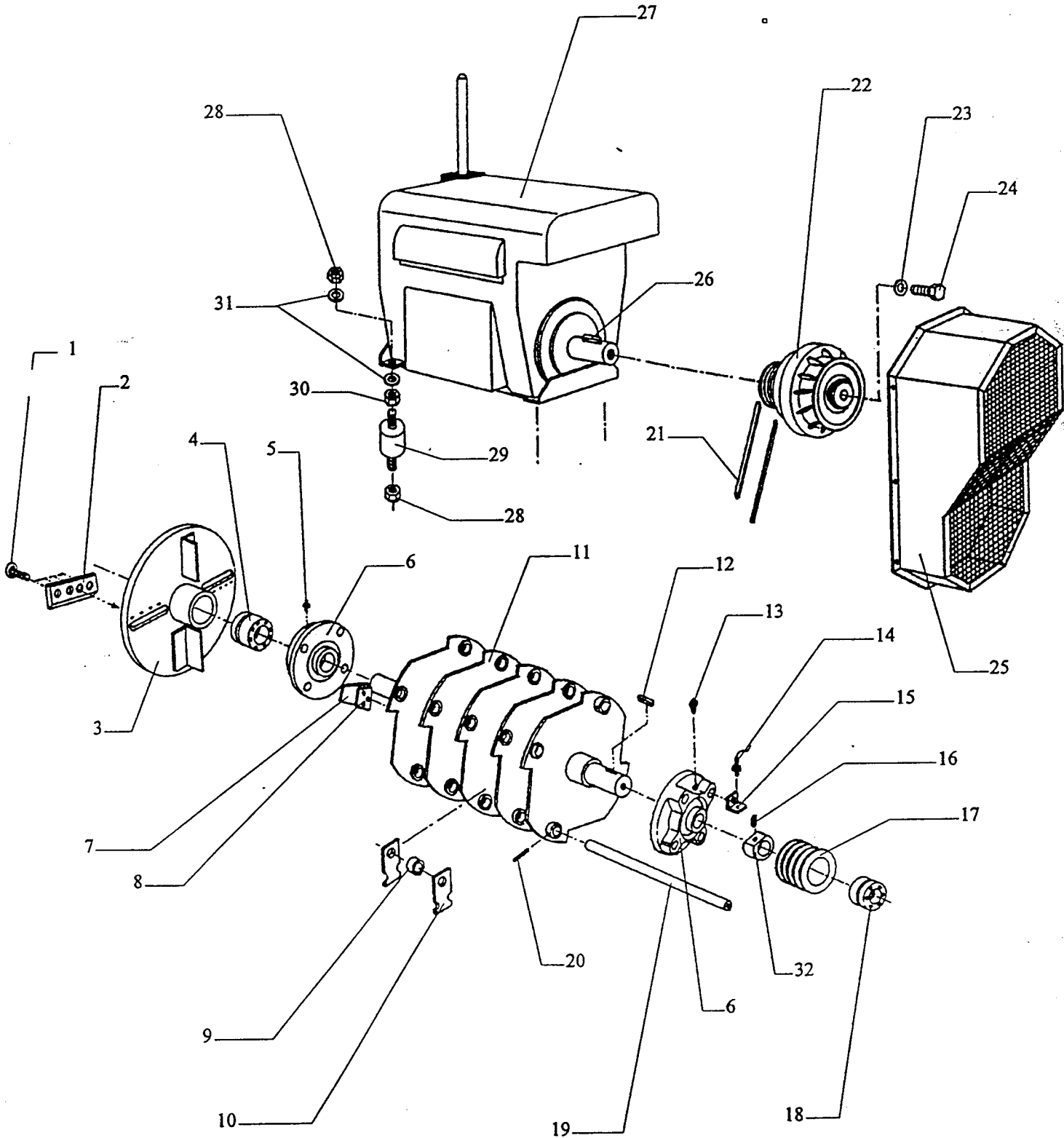
POS	CODE	DENOMINATION
1	0208000004	Out - put rubber band Type:Rubber ring; Herring bone mm 380 L= 6400
2		Turnbuckle T.E. M10 x 115
3		M10 Nut
4		M6 Grease cup
5	01800302	Tensioning roller
6		Flat washer $\phi_i = 10,5$ x $\phi_e = 32$
7		Screw T.E. M 10 x 20
8		Screw T.E. M 10 x 25
9	0230050001	SKF FYTB 25 TF Bearing
10	03800900	Out - put rubber band tensioning plate
11	0414210002	Hydraulic motor S.I. AR 100 N S25 +
	0408010012	Valve S.I. VAF 0.8 - D
12		Screw T.E. M12 x 35
13		Washer plate $\phi_i = 12,5$ x $\phi_e = 40$
14		Nut M12 ALTO
15	0306040200	Reducer Hydrap RD 33 / SAE 4 - 1 / 0,66 - 21
16	5055900002	Reducer bearing plate
17	0230010003	Bearing SKF SY 35 TF
18		
19	01800203	Driven roller
20		Key 10 x 8 L= 50

voeding aggregaat standaard versie



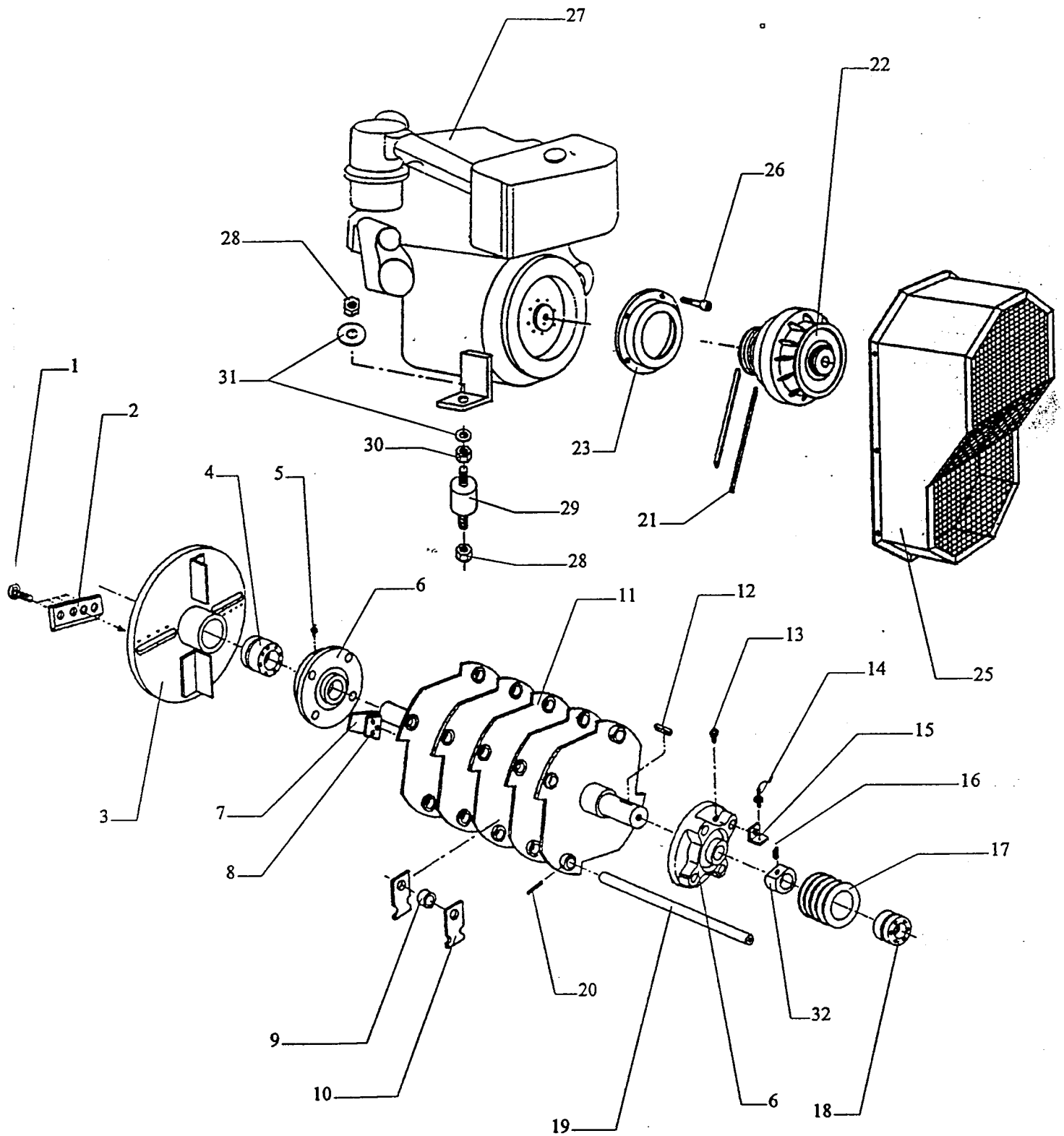
POS	CODE	DENOMINATION
1	0230010002	Bearing SKF SY 25 TF
2	03800102	Complete structure for upper roller lifting
3	03700900	Roller lifting handle
4		M10 lock nut
5	0226020008	Spring $\varnothing m = 24$ x \varnothing filo = 3 L= 99
6		Screw TE M10 x20
7		Flat washer $\varnothing i = 10,5$ x $\varnothing e = 32$
8	0230050001	SKF FYTB 25 TF Bearing
9		Flat washer $\varnothing i = 10,5$ x $\varnothing e = 52$
10	0230050002	SKF FYTB 40 TF Bearing
11	01800602	Dragging chain roller
12		Key 10 x 8 L= 80
13	02201300	Hydraulic motor bearing plate
14		Grease cup M 6
15		M12 Nut
16		Flat washer $\varnothing i = 12,5$ x $\varnothing e = 40$
17		Screw TE M12 x 35
18	0414216001	SI AR 160 NC 25 Hydraulic motor
19		M20 Low nut
20	5055910012	Turnbuckle M20
21		Screw TE M10 x 20
22	0230090001	Chain tensioning SKF TU 30 TF
23		Nut M6
24		Flat washer $\varnothing i = 6,4$ x $\varnothing e = 11$
25	01800701	Feeding chain tension roller
26	09300200	Link for chain
27	01100900	Fixed pin for chain
28	01100800	Connection pin for chain
29		Flat washer $\varnothing i = 10,5$ x $\varnothing e = 40$
30	01800500	Feeding roller
31	01100700	Roller shaft
32		Key 8 x 7 L=40
33	02702000	Roller bearing
34	0229015012	Bearing SKF 6008 - 2RS1
35	0234206800	Seeger ring I 68
36	0220200040	Ring nut M 40 x 1,5
37		Key 8 x 7 L= 32
38	0414220001	Hydraulic motor DANFOS OMR 200

Rotor aggregaat Hatz - in motor versie



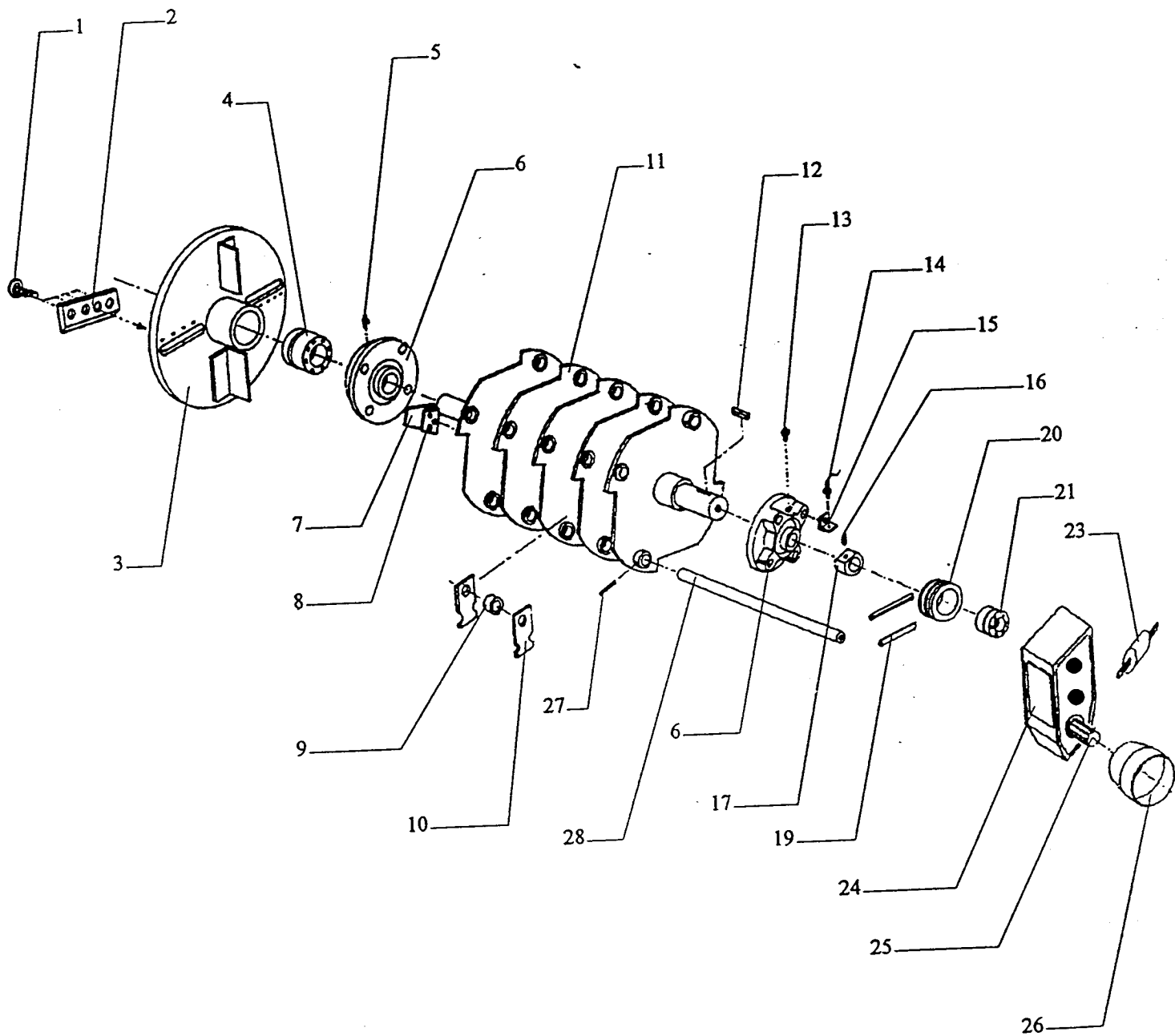
POS	CODE	DENOMINATION
1		Screw T.S.E.I. M10 x 25
2	01400100	Blade
3	01300100	Flywheel
4	0201050008	Taper lock SIT - LOOK 5A 45 x 75
5		M6 Grease cup
6	0230054002	Bearing SKF UCFC 209
7	01401300	Counter hammer
8	01902000	Counter hammer spacer
9	01901002	Hammers spacers thick = 20,6 n° 24 pieces
10	01400300	Hammers n° 48
11	01700104	Rotor
12		Key 14 x 9 L = 80
13		M6 Grease cup
14	0522000001	NO - STRESS sensor
15	02706700	Sensor bearing
16		Grain M8 x 8
17	0231082401	Pulley 4 grooves SpA $\varnothing p=160$ with shaft bush $\varnothing=45$
18	0231090745	Taper lock for pulley 4 grooves SpA $\varnothing p=160$ Shaft $\varnothing=45$
19	01100300	Hammers bar
20		Elastic pin $\varnothing 8$ L= 45
21	0217111682	Belts SpA 1682 n° 4
22	0320006000	Coupling WEST - CAR TYPE 30 with pulley 5 throat SpA $\varnothing p = 140$
23		Flat washer $\varnothing i = 12,5$ x $\varnothing e = 60$ Thick 6
24		Screw T.E. M 12 x 150
25	02903800	Driving belts guard
26		Key 14 x 9 L= 100
27	0302030000	Silent motor HATZ Type 3L40C
28		M 12 lock nut
29	04500400	Antivibrating
30		M 12 Nut
31		Flat washer $\varnothing i = 12$ x $\varnothing e = 36$
32	01902000	Sensor ring

ROTOR AGGREGATE LOMBARDINI 9LD 625 - 2 Built - in Engine Version

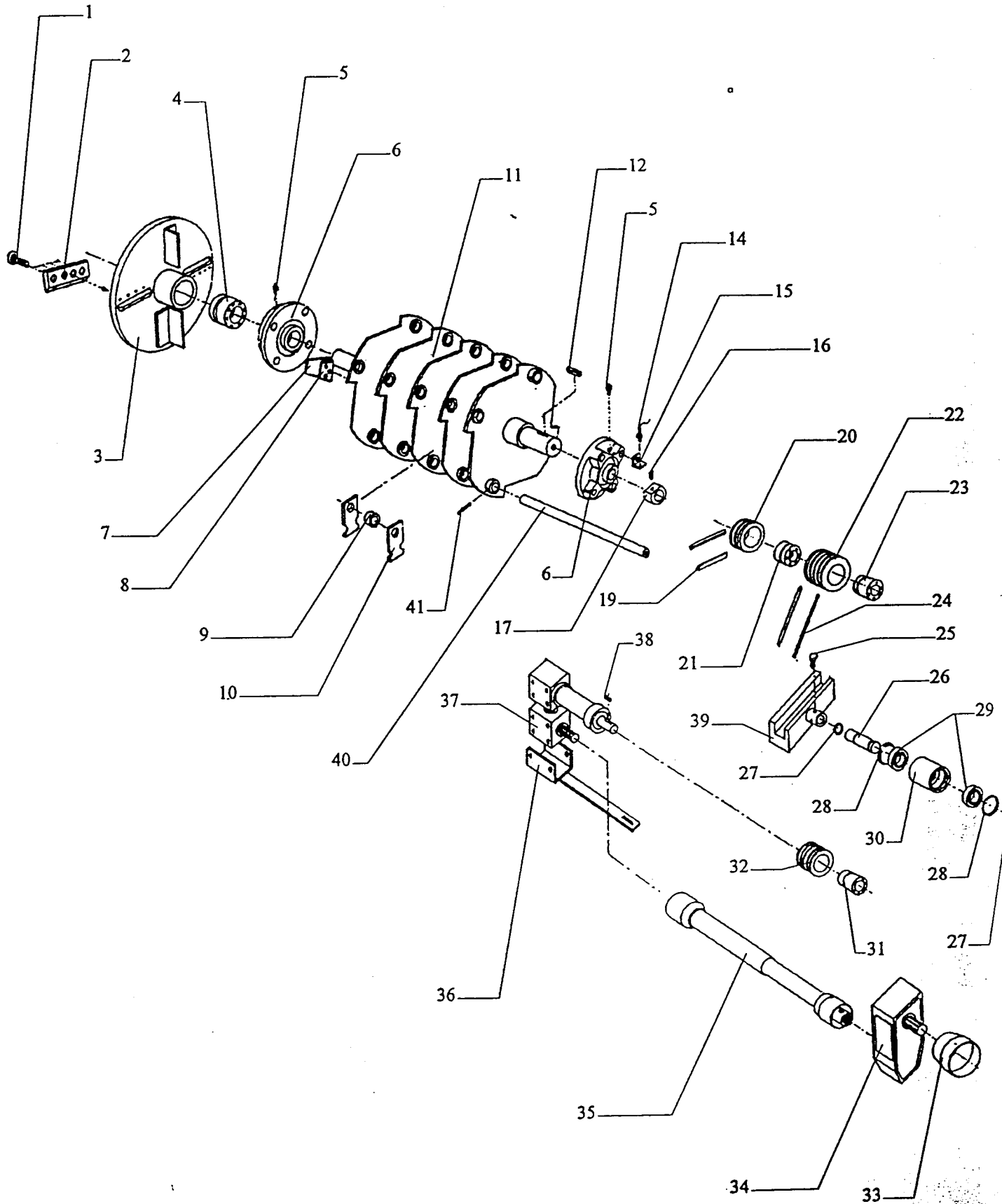


POS	CODE	DENOMINATION
1		Screw T.S.E.I. M10 x 25
2	01400100	Blade
3	01300100	Flywheel
4	0201050008	Taperlock SIT - LOOK 5A 45 x 75
5		M6 Grease cup
6	0230054002	Bearing SKF UCFC 209
7	01401300	Counter hammer
8	01902000	Counter hammer spacer
9	01901002	Hammer spacers Thick = 20,6 n° 24 pieces
10	01400300	Hammers n° 48
11	01700104	Rotor
12		Key 14 x 9 L = 80
13		M6 Grease cup
14	0522000001	NO - STRESS sensor
15	02706700	Bearing support
16		Grain M8 x 8
17	0231082308	Pulley 3 grooves SpA $\varnothing p=160$ with shaft bush $\varnothing=45$
18	0231090645	Taper lock 50.30 Shaft $\varnothing=45$
19	01100300	Hammers bar
20		Elastic pin $\varnothing 8$ L = 45
21	0217111750	Belts SpA 1750 n° 3
22	0231070006	Centrifugal pulley 3 grooves SpA. D. 172
23	0799030002	LOMBARDINI engine guard
24		
25		Driving belt guard
26		Screw T.C.E.I. M
27	0302100000	LOMBARDINI 9LD 625 - 2 PULL engine
28		M 12 lock nut
29		Antivibrating
30		Nut M 12
31		Flat washer $\varnothing i = 12$ x $\varnothing e = 36$
32	01902000	Sensor ring

ROTOR AGGREGATE PTO STANDARD Version

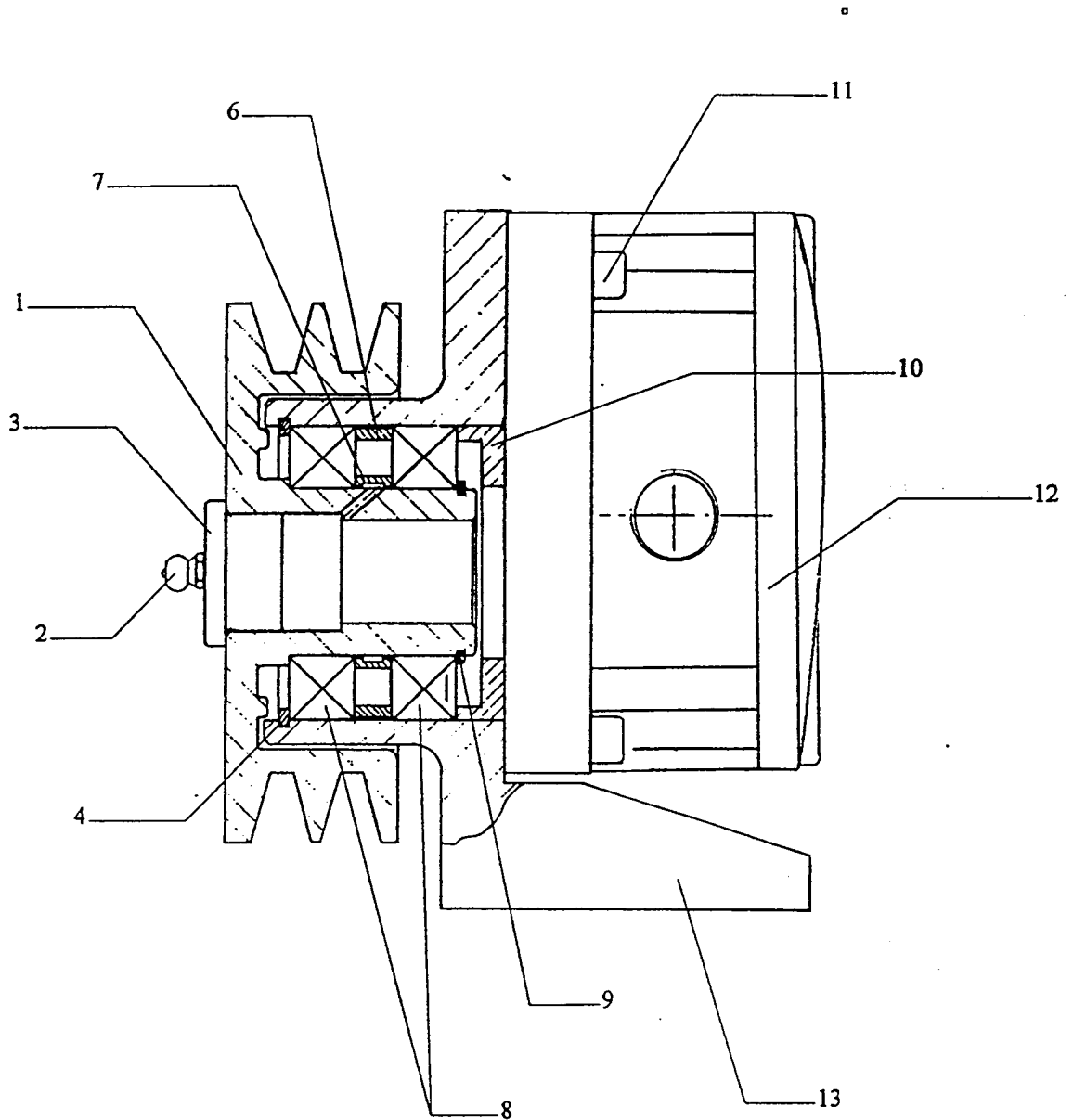


ROTOR GROUP PTO Version with 360° revolving platform



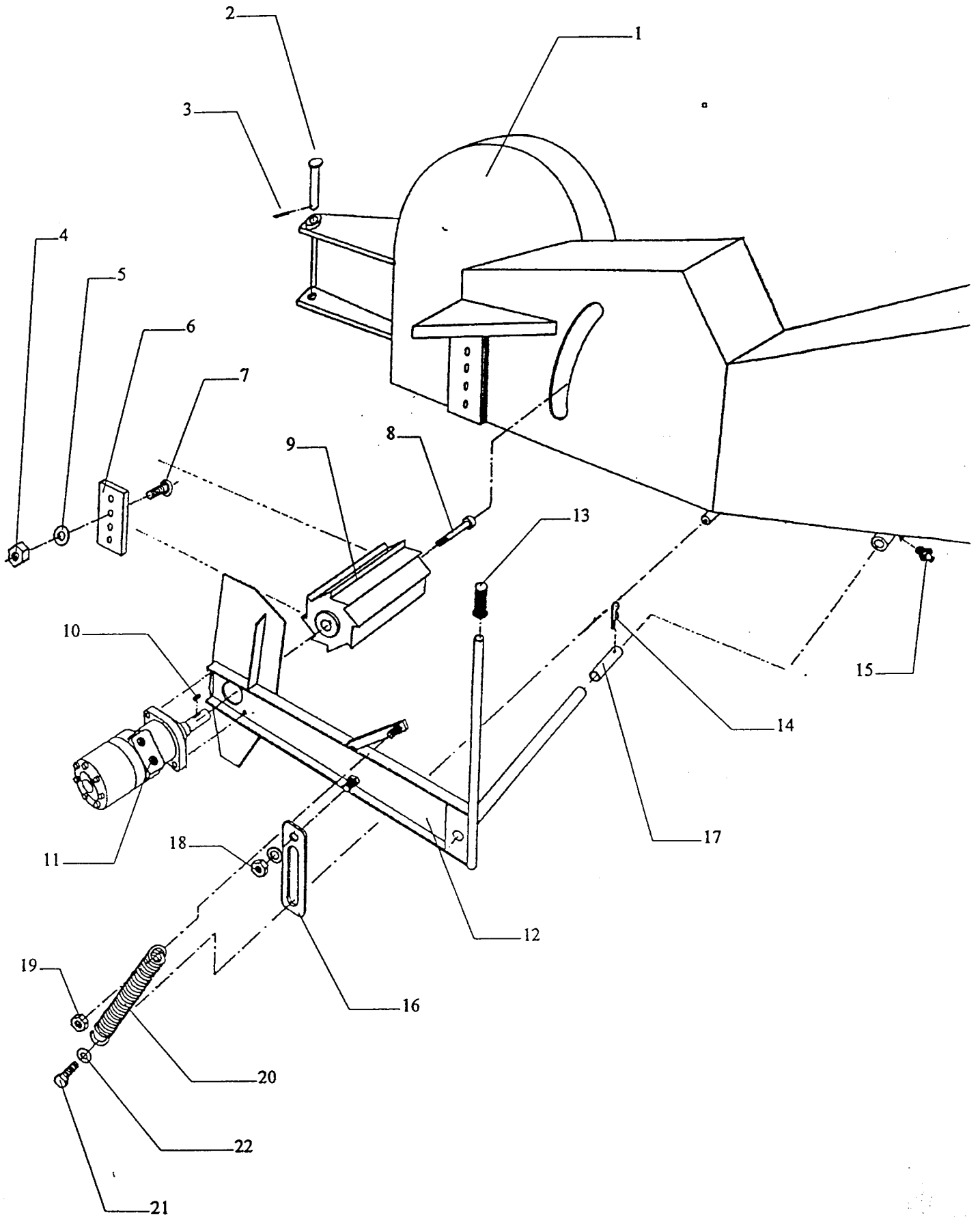
POS	CODE	DENOMINATION
1		Screw T.S.E.I. M10 x 25
2	01400100	Blade
3	01300100	Flywheel
4	0201050008	Taperlock SIT - LOOK 5A 45 x 75
5		M6 Grease cup
6	0230540002	Bearing SKF UCFC 209
7	01401300	Counter hammer
8	01902000	Counter hammer spacer
9	01901002	Hammer spacers Thick = 20,6 n° 24 parts
10	01400300	Hammers n° 48
11	01700104	Rotor
12		Key 14 x 9 L = 80
13		
14	0522000001	NO - STRESS sensor
15	02706700	Bearing support
16		Grain M8 x 8
17	01902000	Sensor ring
18		
19	021711	Belts SpA n° 2
20	11301100	Pulley 2 grooves SpA
21	0201010008	Taper lock SIT-LOOK 1 45 x 75
22	0231082402	Pulley 4 grooves SpA $\varnothing p = 200$ with shaft bush $\varnothing = 45$
23	0231090745	Taper lock for pulley 4 grooves SpA $\varnothing p = 200$ Shaft $\varnothing = 45$
24	021711	Belts SpA n°
25		Screw T.E. M 10 x 25
26	01105300	Shaft for belts tension pulley
27	0234103500	Seeger ring E 35
28	0234207200	Seeger ring I 72
29	0205015006	Bearing SKF 6207 - 2RS1
30	01803000	Belts tension pulley
31	0231090735	Taper lock for pulley 4 grooves SpA $\varnothing p = 200$ Shaft $\varnothing = 45$
32	0231082403	Pulley 4 grooves SpA $\varnothing p = 200$ with shaft bush $\varnothing = 35$
33	0239000001	Cardan guard
34	0306003000	Reducer BIMA IMR 6
	0799030009	Multiplier in let
35	0228105402	Cardan Bondioli & Pavesi 7105061CET07S07
36	02714800	Lower bearing for angular multiplier
37	0798070003	Angular multiplier fitted with support and shaft mounted
38		Key 10 x 8 L=65
39	02715000	Tension belts
40	01100300	Hammers bar
41		Elastic pin $\varnothing 8$ L= 45

OIL PUMP AGGREGATE PTO Version



POS	CODE	DENOMINATION
1	0231222004	Pulley
2		M6 Grease cup
3	3088100102	Cap
4	0234206200	Seeger ring 62l
5		
6	3088100103	External spacer
7	3088100104	Internal spacer
8	0229015003	Bearing SKF 6007 - 2RS
9	0234103500	Seeger ring 35 E
10	3088100105	Cover
11		Screw T.C.E.I. M8 x 30
12	0418210011	Hydraulic oil pump Lamborghini MLPD/G 205 C
13	0719200001	Pump bearing

WOODCHIPPER FEEDING ROLLER (OPTIONAL)



POS	CODE	DENOMINATION
1	07100100	Woodchipper complete feeding hopper structure
2	01105600	Woodchipper feeding hopper pin
3		Elastic pin $\varnothing = 4$ L = 35
4		M 10 lock nut
5		Flat washer $\varnothing i = 10,5$ x $\varnothing e = 21$
6	01400200	Woodchipper anvilblade
7		Screw T.S.E.I. M 10 x 30
8		Screw T.C.E.I. M 10 x 120
9	01800800	Feeding roller
10		Key 7 x 8 L= 35
11	0798110001	Hydraulic motor AR 200 Shaft D 40 L= 123
12	03800300	Roller bearing lever structure
13	0235400001	Handle PVC D. 25 / 27
14		Elastic pin $\varnothing 8$ L=40
15		Grease cup M6
16	05700100	Stroke limiter
17	01200700	Bush
18		M 12 Lock nut
19		M 12 Lock nut
20	0226020016	Spring $\varnothing p = 33$ x $\varnothing wire = 6$ Lp = 220
21		Screw T.C.E.I M 12 x 50
22		Flat washer $\varnothing i = 13$ x $\varnothing e = 24$

Garantiekaart

Gegevens van de koper:

Naam en voornaam:

Adres:

Postcode:

Woonplaats:

Tel.nr.:

Fax nr.:

Naam dealer:

adres:

Postcode:

Woonplaats:

Tel. nr.:

Fax nr.:

Model machine:

Machine nummer:

Datum van aankoop:

Dealer stempel: